

ENSYSTEX[®]

LEADING INNOVATION IN PEST MANAGEMENT



WORLD CLASS INNOVATION AND PRODUCT DISCOVERY



PRODUCT INFORMATION 2022 / 2023

ABOUT ENSYSTEX

Ensysstex is a global, research-based company focused on providing environmentally responsible, effective, urban pest management solutions and has achieved a high international reputation for these products.

Our commitment to the pest management industry is displayed through the team of dedicated professionals employed in South Africa. Ensysstex now has the largest technical sales support team of any innovation based company in South Africa.

Ensysstex develops and owns all its own formulations, performs QA and batch analysis checks on all batches of chemicals and guarantees the consistent quality of all materials sold. Ensysstex is a true specialist in professional pest management for the urban and public health environment.

YOU CALL - WE JUMP

We're all aware that working in today's tough, demanding, fast forward environment, when a problem comes up, it can make life very difficult. That's why Ensysstex has a strong "help" line, dedicated to our valued clients.

If you have any technical questions or require technical support all you have to do is call **080 367 9783** and follow any prompts. We then guarantee that one of our technical support specialists will call you back within 2 hours of your call being placed to assist with the matter.

This support is available 24 hours a day, 365 days a year!

YOUR ENSYSTEX GUARANTEE

If any Ensysstex product fails to meet or exceed your expectations, return the unused portion in the container, at our expense, and we will issue you with a full refund. If you have a challenging situation, Ensysstex guarantees to assist you with the matter and, where required, send one of our trained technical support specialists to visit the site with you.

Ensysstex always uses the highest quality materials to ensure optimal efficacy and safety. SDS to international standards are available for all Ensysstex products and, where relevant, AQIS Approval Certificates for product use in Export Meat Production Facilities are also available.

ENSYSTEX FORMULATIONS

Ensysstex is a world leader in bait technologies and the development of aqueous (water-based) suspension concentrates. Ensysstex guarantees all formulations are of a class-leading standard.

ENSYSTEX DIRECT



Order all your product needs online. Visit www.Ensysstex.co.za to sign up.

YOUR ON TIME DELIVERY GUARANTEE...

ENSYSTEX MAKES THIS COMMITMENT TO YOU:

If you place your order before 2.00pm, your order will leave the same day. If you place your order after 2.00pm, your order will leave the next day. Ensysstex delivers your products, door to door, using one of South Africa's leading courier services to optimise prompt receipt of goods.



AEROTHOR™

EXTRA STRENGTH CRAWLING INSECT SPRAY

Extra strength, super fast kill
aerosol spray.

AEROTHOR KEY FEATURES

- ▶ **Superfast knockdown of cockroaches;** Quite Simply, nothing is faster than AEROTHOR in terms of speed of performance for flushing and killing cockroaches. In fact AEROTHOR will knockdown cockroaches in just a few seconds!
- ▶ **Extra Strength;** To give you the performance you expect as a professional pest manager.
- ▶ **Two Way Nozzle;** This specialised aerosol nozzle allows you to spray through the nozzle for a powerful blast covering a larger area; or alternatively, flip the targeted stainless steel straw application nozzle into place for accurate treatment into cracks and crevices.
- ▶ **Labelled for the control of Crawling Insects;** So you can use it against all common pest species.
- ▶ **Two Pyrethroid Actives;** AEROTHOR contains two actives. Imiprothrin provides super-fast knockdown and kill of crawling pests while the cypermethrin provides long-lasting residual performance.
- ▶ **Will not harm plants;** Safe to use around plants or garden areas.
- ▶ **Low toxic;** So you can use AEROTHOR in schools, kitchens, hospitals, domestic residences, offices, etc.
- ▶ **Low odour;** newly formulated to make it more pleasant in use.

AEROTHOR PRODUCT DETAILS

Active Ingredients:	2 g/kg cypermethrin, 1.4 g/kg imiprothrin
Insecticide Group:	Pyrethroid
Formulation Type:	Aerosol
Pests Controlled:	Crawling insects including bed bugs, cockroaches, silverfish, ants, carpet beetles, fleas, spiders, millipedes and clothes moths
Pack Size / Code:	350 g can (CHEAX1016)
Resistance Group:	3A

Reg. No. L10727 Act No. 36 of 1947
UN No. 1950 2.1

HOW TO USE

Shake can well before using. Keep can as upright as possible and hold about 15-20 cm from the surface. Avoid using on plastic surfaces. Treating surface with AEROTHOR Extra Strength Crawling Insect Spray will kill and protect against a large range of crawling insects. For direct kill spray in the direction of the crawling insect.

ATTRATHOR™

TARGETED INSECTICIDE

Attractive Betrayal: A world first
LIQUID BAIT with advanced micro-encapsulated attractant combined with micro-encapsulated fipronil, the active you know and trust.



ATTRATHOR KEY FEATURES

- ▶ **Quick-release Insect Attractant Micro-capsules™;** Tiny, 2 µm, solid-core capsules which contain the cockroach food attractant in a matrix within a polymer shell. These tiny Micro-capsules have a large surface area relative to their volume, which allows for the quick-release of the attractant. The attractant diffuses out through the polymer shell, quickly luring the cockroaches to the ATTRATHOR Target Zone™.
- ▶ **Controlled-release Active Micro-capsules™;** Larger, 35 – 55 µm, liquid-core capsules contain the active fipronil. These capsules have a finer polymer shell and, trapped within the liquid fipronil core, are tiny bubbles of CO₂. These pressurise the capsules, ensuring that when the insect makes contact with them, the capsules burst open, releasing the deadly fipronil within. These Micro-capsules control the release of the fipronil to ensure maximum residual performance. The larger size also ensures improved performance on porous surfaces.
- ▶ **Quick Elimination;** Within 48 hours, there will be a significant reduction in pest numbers.
- ▶ **Attractive Betrayal;** Insects are lured to the ATTRATHOR Target Zone™ by the Quick-release Insect Attractant Micro-capsules™ where they unknowingly pick up the deadly Controlled-release Active Micro-capsules.
- ▶ **Easy Application;** Through traditional spray equipment targeted into cockroach harbourages. ATTRATHOR can partner, or replace gel bait technology.
- ▶ **Kills More Cockroaches;** Cockroaches passing over the film pick-up the Active Micro-capsules, loaded with fipronil. When they later socialise, they unknowingly pass the toxicant on. This creates the Viral Transfer Effect™ leading to the kill of more cockroaches

ATTRATHOR PRODUCT DETAILS

Active Ingredient:	26 g/L fipronil
Insecticide Group:	Phenylpyrazole
Formulation Type:	ATTRACT & KILL - Liquid bait
Pests Controlled:	Cockroaches
Pack Size/ Code:	250 mL (CHEAT1017)
Resistance Group:	2B

Reg. No. L10020 Act no. 36 of 1947

PERFORMANCE

ATTRATHOR is unique since it provides both active and passive control of cockroaches.

ACTIVE CONTROL is achieved when the Quick-release Insect Attractant Micro-capsules™ lure the cockroaches to the ATTRATHOR Target Zone™ where they break the Controlled-release Active Micro-capsules™ containing the deadly fipronil. Due to fipronil's non-repellent chemistry, with its presence further concealed by the polymer coating of the Micro-capsules, the cockroaches remain totally unaware of the presence of the fipronil.

Death occurs through either Contact Action - as the fipronil passes into the cockroach through the cuticle; Stomach Action - as the cockroach grooms itself and breaks or removes the Active Micro-capsules laced with fipronil; or through the Viral Transfer Effect™ - where the cockroaches pass the Active Micro-capsules onto other cockroaches.

PASSIVE CONTROL is achieved through the effects of the liquid film forming a residual defence zone. ATTRATHOR is applied as a targeted surface spray into cockroach harbourages and areas where cockroaches frequent. Here it works like any other residual surface spray, except there is a very big benefit because ATTRATHOR is powered by fipronil's non-repellent insecticidal chemistry. It protects the fipronil, slowly releasing it over time; providing up to three months of passive control.



BITHOR®

DUAL ACTION INSECTICIDE

The Silent Assassins! Two actives, two different modes of action combine into the unstoppable insecticide.

BITHOR DUAL ACTION KEY FEATURES

- ▶ **Two Actives;** Each with a totally different mode of attack combine into one unstoppable insecticide that is stronger than its individual components.
- ▶ **Non Repellent;** Bifenthrin is combined with the non-repellent imidacloprid, to create a combination product that is effectively non-repellent.
- ▶ **Blended Active Concentrate (BAC) Technology;** The two actives are milled and blended together so they meld into one to disguise their presence.
- ▶ **Long term;** Residual action is provided through the intensified effects of two well known and trusted actives.
- ▶ **Power From Synergy;** By combining two actives from two totally different chemical groups we create a unique product that kills the toughest pests. The two actives combine together to create a synergistic effect with each actively intensifying the effects of the other, to create a more potent solution than either alone.
- ▶ **Two Different Modes of Action;** Imidacloprid is a neonicotinoid insecticide that acts as a synaptic toxin. It mimics the actions of the naturally occurring neurotransmitter, acetylcholine. In contrast, bifenthrin is a pyrethroid insecticide that acts as an axonic toxin affecting the sodium : potassium gate.

BITHOR DUAL ACTION PRODUCT DETAILS

Active Ingredients:	45 g/L bifenthrin, 55 g/L imidacloprid
Insecticide Group:	Bifenthrin (pyrethroid), imidacloprid (neonicotinoid)
Formulation Type:	Odourless, waterbased micro-suspension concentrate
Pests Controlled:	Ants, Cockroaches, Mosquitoes, Flies, Fleas, Ticks, Bed bugs, Spiders, Clothes moths, Fishmoths (silverfish)
Pack Size/ Code:	1 L (CHMBI1017), 3 L (CHMBI1018)
Resistance Group:	3A 4A

Reg. No. L9717 Act No. 36 or 1947

PERFORMANCE

BITHOR DUAL ACTION blends two actives, bifenthrin and imidacloprid, together to form a micro-suspension concentrate, where the particle size is optimised to penetrate the insect cuticle more readily, whilst providing improved residual performance on a wide range of surfaces and under a wide range of weather conditions.

BLATTATHOR[®] ULTRA

SUPERSONIC COCKROACH GEL BAIT

A gel bait formulated with
FIPRONIL, the active you know
and trust!



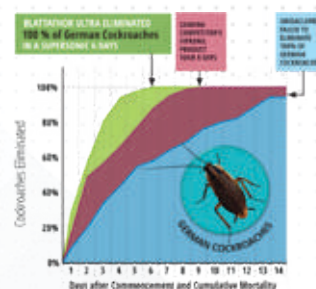
BLATTATHOR ULTRA KEY FEATURES

- ▶ **Highly palatable mix of attractants, nutrients and feeding stimulants;**
A clear winner with its ULTRA FAST kill and elimination of pest cockroaches, even nymphs - which means greater customer satisfaction and fewer call-backs!
- ▶ **Supersonic knockdown;** The Viral Feed Through Effect™ ensures supersonic knockdown of cockroaches, and with its high moisture retention, it keeps on killing.
- ▶ **Highly palatable;** It is unique blend of several highly palatable cockroach foods and proprietary feeding attractants combine to ensure that cockroaches readily feed, giving you great results.
- ▶ **Professional strength;** Fuelled by fipronil at 0.5 g/kg BLATTATHOR ULTRA ensures cockroaches start to vanish quickly, meaning greater customer satisfaction and fewer call-backs.

BLATTATHOR ULTRA PRODUCT DETAILS

Active Ingredient:	Professional strength 0.5 g/kg fipronil
Insecticide Group:	Fipronil is a broad spectrum phenylpyrazole insecticide
Formulation Type:	Gel bait - ready-to-use gel
Pests Controlled:	Cockroaches
Pack Size/ Code:	4 x 30 g tubes (CHEBG2017)
Resistance Group:	2B

Reg. No. L9297 Act No. 36 of 1947



PERFORMANCE

Place BLATTATHOR ULTRA bait as close as possible to cockroach harbours. Place bait spots into cracks and crevices away from where they are likely to be removed by cleaning.

DIRECTIONS FOR USE

For German and American cockroaches in commercial, industrial and residential buildings. Apply as a 2 mm to 4 mm diameter bait spot. Use the larger bait spot for American cockroaches.

Apply 12-24 bait spots for a 30 m² treatment area for heavy infestations and 4-6 bait spots for a 30 m² treatment area for light infestations.

ZENITHOR™ GEL COCKROACH BAIT

A LEGEND EMERGES

ZENITHOR was developed with the view of creating a legendary cockroach gel bait, a gel bait that outperforms all others.



ZENITHOR GEL COCKROACH BAIT KEY FEATURES

- **Ensures Faster Kill;** In trials with the German cockroach (*Blattella germanica* Linnaeus), ZENITHOR killed more than 80% of the cockroaches within 24 hours and 100% mortality occurred after 72 hours. It well out-performed even the leading fipronil based cockroach gel bait.
- **Enhanced Palatability;** To ensure optimal feeding, ZENITHOR's fine dining recipe provides a complete nutrient source including novel ingredients to ensure it is eaten in preference to competing foods in the environment.
- **Synergised High-Consumption Bait Technology™;** Provides a unique and novel range of natural sensory attractants to draw the cockroaches to the bait spots, together with some carefully selected feeding stimulants to promote increased consumption of gel baits, leading to improved performance.
- **Viral Excretion Transfer™;** ZENITHOR intoxicated cockroaches contaminate their harbourages and the surrounding environment with ZENITHOR-enriched vomitus and faeces to create the most potent Transfer Effect. Viral Excretion Transfer is critical for passing the toxicant on to early instar nymphs, that do not venture far for their food resources.
- **ZENITHOR Enzyme Bio-activation™;** Following consumption, ZENITHOR is metabolised into a deadly insect neurotoxin, causing gradual death. This requirement for the conversion of the active provides a safety factor since it is effectively 'activated' by the insect.
- **Eliminates bait adverse cockroaches;** It is well documented that populations of the German cockroach have rapidly evolved an adaptive behavioural aversion to glucose, a component of most commercial baits. ZENITHOR does not use glucose in the formulation, so it can effectively tackle the toughest cockroach jobs.

ZENITHOR GEL COCKROACH BAIT PRODUCT DETAILS

Active Ingredient:	6.0 g/kg (S)-indoxacarb
Pesticide Group:	Oxadiazine
Formulation Type:	Gel bait - ready-to-use
Pests Controlled:	Cockroaches
Pack Size/ Code:	4 x 30 g (CHEZA1011)
Resistance Group:	22A

Reg. No. L10693 Act No. 36 of 1947

PERFORMANCE

ZENITHOR's outstanding performance arises from our most complex cockroach gel formulation to date. Employing the most sophisticated gel chemistry, ZENITHOR provides improved physical performance; giving you the functional features you demand in terms of ease of application, with the gel spots staying put, whilst still retaining their high moisture content to provide improved flavour for cockroaches - and longer-lasting results.

But there is even more to this new legend, ZENITHOR introduces more than ten feeding stimulants and sensory attractants to maximise cockroach feeding, deliver faster kill and ensure total elimination of all cockroach aggregates.

ZENITHOR Gel Cockroach Bait has been formulated to provide a stable gel, even in hot kitchens and tropical environments, whilst retaining a moist, viscous presentation at all times to ensure superior consumption by cockroaches for an extended time frame.

HYMENOPHTHOR[®] ULTRA

GRANULAR ANT & COCKROACH BAIT

Targeted to kill all species of
ants and cockroaches, including
nymphal stages.



HYMENOPHTHOR ULTRA KEY FEATURES

- ▶ **Eliminates;** All species of ants and cockroaches, including large and small cockroach species.
- ▶ **Liquid Oil Phase Release™;** Technology ensures uptake of the fipronil, and produces results equal to, or better than, those of gel baits for cockroaches - including nymphal stages.
- ▶ **Viral Feed Through Effect™;** Of fipronil further ensures its rapid spread throughout ant colonies. Since fipronil is a quick acting insecticide, it is important to use it at a low rate to ensure it is spread throughout the entire colony.
- ▶ **Advanced Bait Technology™;** Provides a unique composite of proteins, sugars and oils to target sugar feeding species, oil feeding species and protein feeding species.
- ▶ **Ultra Strong;** Performance is particularly spectacular when targeting cockroach nymphal stages, the most difficult life-stage to control.

HYMENOPHTHOR ULTRA PRODUCT DETAILS

Active Ingredient:	0.1 g/kg fipronil
Insecticide Group:	Phenylpyrazole
Formulation Type:	Granular bait - ready-to-use
Pest Controlled:	Ants and cockroaches, all species
Pack Size / Code:	450 g (CHEHU1003)
Resistance Group:	2B

Reg. No. L9298 Act No. 36 of 1947

PERFORMANCE

As a granular bait, efficacy is enhanced by the ant's feeding behaviour. Worker ants are generally liquid feeders and cannot ingest solid baits. So they use their legs and mouthparts to physically carry the solid bait granules back to the nest for the larvae to digest and feed to the colony.

Therefore the bait is not diluted when it reaches the nest. In contrast, with liquid or gel baits, the ants ingest the bait and then pass it through to nest mates by trophallaxis, which means there is some dilution of the toxicant as it is passed from one ant to the next. More importantly though, with the Liquid Oil Phase Release™ technology, the workers are also able to feed directly on the HYMENOPHTHOR ULTRA and receive a toxic dose of the active, as well as feeding on the pre-digested liquid from the larvae.

Cockroaches have an exceptionally high preference for solid based foods, with bread ranking higher than most cockroach gels as a preferred food. HYMENOPHTHOR ULTRA optimally satisfies cockroaches preference for a cereal based diet leading to aggressive feeding and a speed of kill better than that achieved with gel baits. The Liquid Oil Phase Release ensures the fipronil is readily digested by the cockroaches.

MAGNATHOR™

MAGNETIC INSECTICIDE WITH MAGTHANITE®

MAGNETIC ATTRACTION - OUTSTANDING RESULTS

Eliminates termites, cockroaches
and ants.

MAGNETIC ATTRACTION - OUTSTANDING RESULTS



MAGNATHOR KEY FEATURES

- ▶ **A totally novel approach to cockroach control;** MAGNATHOR MAGNETIC is a dry, flowable bait/powder. For cockroaches and ants, it contains a desirable blend of food attractants that lure the foraging insects towards the MAGNATHOR Kill Zone™. As they approach the Kill Zone, the insects literally act like a magnet and draw the MAGNATHOR particles to their exoskeletons resulting in their death.
- ▶ **Eliminates Termite Colonies;** MAGNATHOR MAGNETIC is applied directly on to termites or into their active workings, bivouacs or colonies. Just about anywhere termites exist and you need to get rid of them quickly, indoors or outside. For termite nests in trees, stumps, posts, fences, landscaping timbers, wharves, bridges, mounds and wall cavities, simply drill several holes into the nest and apply using the ACCUTHOR Precision Blower available exclusively from Ensystex. Monitor at weekly intervals and... watch the termites disappear!
- ▶ **Highly Effective;** MAGNATHOR delivers results
- ▶ **Magnetic Attraction;** MAGNATHOR employs the power of paramagnetism. The magnetic properties of the constituent powders of MAGNATHOR cause the powder to adhere to the insects' exoskeletons when they approach it. The powder enters the insects' bodies through the soft membranes in the exoskeleton. When compared with conventional treatments, MAGNATHOR's magnetic properties deliver superior results in the two critical areas of adhesion and transferability resulting in accelerated kill, and colony elimination!
- ▶ **Accelerated multiple cascade effect™;** MAGTHANITE's magnetic powder technology, powers MAGNATHOR's Accelerated Multiple Cascade Effect™ which provides a three-level mortality chain.
- ▶ **Active and Passive Kill;** The MAGNATHOR powder enters the insects through either ingestion or contact action through the soft membranes of the exoskeleton. The magnetic properties of MAGNATHOR deliver superior results.
- ▶ **Ultra Killing Power;** MAGNATHOR is powered by fipronil.

MAGNATHOR PRODUCT DETAILS

Active Ingredient:	0.5 g/kg fipronil
Insecticide Group:	Phenylpyrazole
Formulation Type:	Dry, flowable powder
Pests Controlled:	Cockroaches
Pack Size/ Code:	4 x 30 g tubes (CHEMG1006)
Resistance Group:	2B

Reg. No. L10417 Act No. 36 or 1947



PERFORMANCE

MAGNATHOR employs the power of paramagnetism. This is the weak magnetic attraction shown by insect exoskeletons. Insect chitin shows a clear attraction to ferromagnetic particles.

The magnetic powder, MAGTHANITE, used in MAGNATHOR is a blend of Myranite and strontium ferrite. Research has supported the attraction between this ferromagnetic powder and insect cuticles. Tests by Smith and Moores at Rothamsted Experimental Station, UK showed that insects passing over a residual deposit of MAGTHANITE picked up an average of 56% more particulate material than those passing over a deposit of inert dust. In a further test they found that 250% more MAGTHANITE was transferred between insects.

These paramagnetic processes are exploited by MAGNATHOR to provide rapid control of insect populations.

MAGTHANITE is a registered trademark of EIGH Energy Investment Group Holding Co. Ltd. and is protected by patents.

MAXXTHOR®

TERMITICIDE & INSECTICIDE

High performance termiticide and insecticide for indoors & outdoors.

Superior soil penetration,
powerful performance, odourless,
professional strength, water-
based and long-term residual.



MAXXTHOR KEY FEATURES

► **A unique professional strength, water-based formulation containing 100 g/L bifenthrin that is priced to perform;** This gives you premium quality at a price you can truly afford.

► **MAXXTHOR is labelled for the long-term control of a wide range of pests including urban insect pests, vectors, spiders, ticks, turf insects and termites;** So when you carry MAXXTHOR with you it is a total solution for all your pest control needs.

► **MAXXTHOR Mosquito Protection Zone;** A Special program providing your clients with up to eight weeks of freedom from mosquitoes and other biting insects.

Odourless; No need to worry about smells. Since this is a water-based product it is gentle on the nose.

► **Water-based;** No staining, no corrosion of your equipment.

► **Tested in Australian soils and through reticulation systems;** Since MAXXTHOR was the primary registrant we had to prove its performance in a wide range of soils. So you can be sure it offers the best quality termite barrier possible.

► **Withstands degradation by sunlight, rain and heat;** So you have fewer call backs.

► **Non-sensitising;** This means you are less likely to experience the skin tingling associated with most pyrethroids.

► **Safe to plants and rapidly metabolised by plants and animals;** In fact MAXXTHOR is designed for direct application to foliage. And the active ingredient is in widespread use on a wide range of food crops.

► **Approved for use indoors and outdoors, in the most sensitive areas;** So you can take it anywhere with you.

No hydrocarbon solvents; So you have no worries about staining, odours, or equipment corrosion.

► **Approved for both pre-construction and post-construction termite management;** A total termite solution.

► **Long term residual;** There is no product on the market with a longer label claim for termite management. MAXXTHOR claims protection for ten years or more.

► **Contains Ensystex's unique Microbial Protection Blend™;** To ensure the product remains fresh out in the field and in the back of your truck.

MAXXTHOR PRODUCT DETAILS

Active Ingredient:	100 g/L bifenthrin
Insecticide Group:	Pyrethroid
Formulation Type:	Micro-fine suspension concentrate (water-based)
Pest Controlled:	Controls a wide range of pests as per the product label
Pack Size/ Code:	5 L (CHEMX2010)
Resistance Group:	3A

Reg. No. L8793 Act No. 36 of 1947

PERFORMANCE

MAXXTHOR also comes with the Ensystex Ten Year *Performance Guarantee*.*

MAXXTHOR® TURBO

TARGETED INSECTICIDE

Turbo charge your clients into the future, today.

STOP Callbacks, increase client satisfaction through Superfast knockdown, Long term residual performance, Resistance Fighter.



MAXXTHOR TURBO KEY FEATURES

- ▶ **Revolutionary;** New suspo-emulsion formulation combines three active ingredients together to work better than anything you have experienced before.
- ▶ **Turbo Kill;** The turbo charged oil phase enters rapidly through the insect's spiracles; allowing the oil phase insecticides to instantly halt the insect nervous system.
- ▶ **Long Term;** The micro-particles of bifenthrin are evenly spread by the TURBO organic phase ensuring long-term protection.
- ▶ **Resistance Fighter;** Piperonyl butoxide works to inhibit the enzymes that breakdown and detoxify pyrethroids, thus restoring their effectiveness against resistant or tolerant insects. Moreover it has also been proven to delay resistance development. Piperonyl butoxide is a specific inhibitor of microsomal oxidases, and has also been shown to inhibit resistance-associated esterases. Both these modes of action serve to enhance and potentiate the power of MAXXTHOR TURBO to ensure you get the best results.

MAXXTHOR TURBO PRODUCT DETAILS

Active Ingredients:	100 g/L bifenthrin, 10 g/L imiprothrin, 120 g/L piperonyl butoxide
Insecticide Group:	Synergised pyrethroid
Formulation Type:	Suspo-emulsion
Pests Controlled:	Controls a wide range of pests as per the product label
Pack Size/ Code:	1 L (CHEMT1007)
Resistance Group:	3A

Reg. No. L10023 Act No. 36 of 1947

PERFORMANCE

A real problem with pyrethroid insecticides is the way they can scatter the insects, especially cockroaches. This in turn can lead to a spread of the problem. Now MAXXTHOR TURBO provides a total solution through the super fast action of imiprothrin, and its exceptional activity against cockroaches.

This speed of action arises as a consequence of imiprothrin acting much faster at the target site, the insect nervous system, than any other pyrethroid. When imiprothrin is applied directly to the cockroach nervous system, there is a rapid decline in spontaneous firing, followed by the rapid and complete disappearance of any charge.

PROTHOR™

200 SC TERMITICIDE

The protector providing a professional standard for protecting buildings against termites.



PROTHOR KEY FEATURES

- ▶ **Innovative Formulation;** Ensystex have taken the formulation of imidacloprid as a termiticide to the next level. With a micro-fine suspension concentrate ensuring particle sizes of less than 5 microns for better soil penetration and viral transfer. PROTHOR is also blended to protect it better from degradation in your vehicles.
- ▶ **PROTHOR is undetectable;** Some soil treatment termite control products do not kill termites, instead they repel them. These products are effective when applied in a perfect and continuous gap-free termite barrier, but if there are any gaps in the barrier through which termites can enter, its 'hello termites'.
- ▶ **Minimal impact on the environment and you;** Studies have shown that during applications of PROTHOR, airborne residues of PROTHOR in the structure are minimal. This means it is safe to remain at home while the PROTHOR Termite Defence Zone is being applied under and around your home. This is unlike some other termiticides which require you to vacate your home while they are being applied.
- ▶ **PROTHOR is easy on the nose;** In fact PROTHOR is almost odourless since it is a water-based product.
- ▶ **Non-sensitising;** This means no unpleasant sensations as often caused by other termiticides.
- ▶ **Safe to plants and rapidly metabolised;** Indeed the active in PROTHOR is widely used on agricultural food crops, in orchards, nurseries and in products applied directly to pets.
- ▶ **Approved for post-construction and pre-construction treatments;** For pre-construction PROTHOR should be applied through a reticulation system.
- ▶ **Employs Ensystex's unique Microbial Protection Blend™;** To ensure the product remains fresh out in the field and in the back of your truck.

PROTHOR PRODUCT DETAILS

Active Ingredient:	200 g/L imidacloprid
Insecticide Group:	Neonicotinoid
Formulation Type:	Water-based, micro-fine suspension concentrate
Pests Controlled:	Termites
Pack Size/ Code:	3 L (CHEPR1004 and 1 L CHEPR1003)

Reg. No. L9794 Act No. 36 of 1947

PERFORMANCE

When applied to soil at recommended rates, PROTHOR is undetectable by termites as they tunnel through it. Since termites can't detect PROTHOR treated soil, they can't avoid it and are killed by their contact with it. We call this the PROTHOR Termite Defence Zone™. When termites unknowingly tunnel through PROTHOR treated soil, they accumulate PROTHOR on the outside of their bodies. PROTHOR does not immediately kill termites exposed to it. The delayed toxicity of PROTHOR allows contaminated termites to interact with non-exposed termite nestmates. This interaction can take place over three days. This ensures greater transfer and kills more termites than similar products. Non-affected termites that clean and groom other termites recently exposed to PROTHOR are themselves secondarily exposed and killed. This transmission of PROTHOR from termite to termite which cannot be detected or avoided by termites is referred to as the PROTHOR Viral Effect™.

The active ingredient in PROTHOR has some very special and unique soil binding properties. Chemists call these properties Hysteretic Binding. This unique chemistry means that PROTHOR is relatively slow to bind to soil particles, but once it does bind, it grips very tightly to ensure the Termite Defence Zone remains in place for a long time; to keep on killing termites. This hysteretic binding effect is important because it ensures that the PROTHOR Defence Shield™ created around your clients home is as complete and continuous as possible.



ULTRATHOR™

WATER-BASED TERMITICIDE & INSECTICIDE

Powered by fipronil, the active you know and trust. Guaranteed to provide protection against termite entry for up to 8 years or more*.

ULTRATHOR KEY FEATURES

- ▶ Non-repellent to termites; So they are totally unaware of its presence in the soil.
- ▶ Absorbs tightly to soil, has low solubility in water, and a low vapour pressure; As do its environmental degradates. Low application rates, combined with the unique ULTRATHOR formulation also reduces the risk of run-off.
- ▶ Fast elimination; Of termites attacking buildings together with highly effective, long-term residual control.
- ▶ Viral Transfer Effect™; This unique mode of action allows ULTRATHOR to rapidly spread throughout the termite colony, the same way a virus spreads through the internet, infecting all in its path.

ULTRATHOR PRODUCT DETAILS

Active Ingredient:	100 g/L fipronil
Insecticide Group:	Phenylpyrazole
Formulation Type:	Micro-fine water-based suspension concentrate
Pests Controlled:	Termite
Pack Size/ Code:	1 L (CHEUL1007) 3 L (CHEUL1016)
Resistance Group:	2B

Reg. No. L9296 Act No. 36 of 1947



PERFORMANCE

When termites approach the ULTRATHOR Termite Defence Zone™, they pick up the molecules of fipronil. Those termites that remain in the Termite Defence Zone, blissfully unaware of the presence of ULTRATHOR, will quickly die. Those termites that do not remain tunnelling into the ULTRATHOR Termite Defence Zone usually survive long enough to transfer the ULTRATHOR to other termites in the colony through grooming.

ULTRATHOR is toxic to termites by contact or ingestion. It causes death to termites by disrupting their nervous system. It binds to three types of chloride-channels on the membranes of insect neurons, preventing calcium ion influx into the cell. One of these channels is controlled by the neurotransmitter gamma-aminobutyric acid (GABA) and the other two are controlled by glutamate. The presence of three different target sites accounts for ULTRATHOR's high potency against termites.

FUMITHORTM DELTA

INSECTICIDE SMOKE GENERATOR

FUMITHOR DELTA is a revolutionary new way of eliminating a wide range of flying and crawling insect pests, even in previously inaccessible places.



FUMITHOR DELTA - REACHES FURTHER

- ▶ FUMITHOR DELTA uses smoke to reach inaccessible areas, penetrating deep into the tiniest cracks and crevices where the pests hide.
- ▶ With particle sizes down to just 1 micron the smoke can penetrate into places that are simply not reached by thermal fogs or ULV sprays.
- ▶ The active constituent - deltamethrin - is deposited on vertical, horizontal and underside of horizontal surfaces ensuring the most thorough treatment possible.
- ▶ There is nowhere for pests to hide from FUMITHOR DELTA !

▶ Powered by Deltamethrin:

FUMITHOR DELTA is the only insecticide smoke generator to use deltamethrin, a broad spectrum pyrethroid, as the active constituent:

- FUMITHOR DELTA is proven in independent trials to be up to 10 times more potent than other smoke generators.
- Less insecticide per m³ means it's more economical while reducing operator exposure to poison.
- Deltamethrin has been proven to have a good toxicological and environmental profile

FUMITHOR DELTA PRODUCT DETAILS

Active Ingredient: 20 g/kg deltamethrin

Formulation Type: Ready to use smoke generator

Registered to kill: Ants, cockroaches, caterpillars, cockroaches, fleas, flies, mosquitoes, hide beetles, silverfish, bed bugs, spiders, stored product insects, bird mites, carpet beetles, clothes moths, aphids.

Pack Size/ Code: FUMITHORTM Delta 40 g x 6 Generators ((CHEFD1016)

How to use:

**ALWAYS READ
THE COMPLETE
PRODUCT LABEL
FOR COMPLETE
USE DETAILS.**

- Close doors, windows and ventilators.
- Isolate or turn off any smoke alarms.
- Remove people, animals, fish and birds from area to be treated.
- Remove silk and rayon fabrics as discolouration may occur.
- Calculate the volume to be treated (volume = area x height) and determine how many generators are required. Space generators evenly through the building to be treated.
- Place the generator on a fireproof base at least 700 mm in diameter, on a protective floor covering or in a metal bucket.
- DO NOT remove protective cellophane sleeve around the generator.
- Ignite by lighting the protective cellophane sleeve.
- Always ignite those generators furthest away, lighting those nearest your exit last. Leave immediately after lighting smoke generators. The generator will burn for approximately 30 - 45 seconds, however keep area airtight for at least 3 hours after lighting.
- Ventilate for 30 - 60 minutes before re-entry.

Where to use:

Ideal for enclosed areas: such as storage sheds, warehouses, shipping containers, commercial buildings, industrial facilities and public spaces; Protects agricultural areas: including grain silos, glasshouses, animal housing and agricultural buildings; Rapid clean-out of insect pests: in commercial and domestic situations that need protecting quickly and effectively.

Reg. No. L11061 Act No. 36 of 1947

PERFORMANCE

The FUMITHOR DELTA generator is ignited to fill the air with advanced smoke technology.

MINIMAL IMPACT ON THE ENVIRONMENT:

Smoke vapour is the optimal method of transmission when targeting large areas due to the minimal quantities of pesticide required - protecting your property and the environment.

FLY-FREE TRAP



FLY-FREE TRAP KEY FEATURES

Control flies in any outdoor area... resorts, holiday parks, around commercial food processing and food handling establishments, around livestock, municipal waste sites and more. You can even enjoy the outdoor spaces around your home fly-free!

ECOTHOR ACTIVE NATURE FLY-FREE uses a pesticide-free 100% natural approach to fly control, employing a unique and highly attractive, food-based lure to draw the flies into the proprietary FLY-FREE Traps, from which there is no escape. Quite simply, FLY-FREE becomes their final resting place in this ecological approach to fly control. It's also simple and easy to set up and maintain!

FLY-FREE TRAP PRODUCT DETAILS

Active Ingredient:	Pesticide-free, unique food-based lure.
Formulation Type:	Trap with bait.
Pests Controlled:	Common species of nuisance flies including house flies (<i>Musca domestica</i>), flesh flies (<i>Sarcophaga</i> spp), blow flies (Calliphoridae family), lesser house flies (<i>Fannia canicularis</i>) and horse flies (Tabanidae family).
Pack Size/ Code:	5 L and 10 L buckets (ENFF1008 / ENFF1007 Granules) ENFF1006
Resistance Group:	Not applicable.

PERFORMANCE

FLY-FREE Granules are 100% food-based. The granules come in a water-dispersible sachet, so there is no messy preparation, just fill the FLY-FREE Trap with water and throw in the sachets. The sachets slowly dissolve and release the granules into the water. Over the next few days, the granules activate in the water and start to emit a highly attractive odour that flies just adore. After 2-3 days you will see many flies buzzing around the Traps.

The Traps contain our unique Unidirectional Cones. These Cones allow the flies to easily enter the FLY-FREE Trap. Since they cannot escape, the FLY-FREE trap, quickly becomes the flies' final resting place. **You will likely be amazed just how many flies you will catch!**

EXTERRA[®]

TERMITE COLONY ELIMINATION with REQUIEM[®] Termite Bait

The World's Number One Termite
Baiting System, Total Elimination of
Termites – GUARANTEED.



EXTERRA KEY FEATURES

- ▶ **Environmentally friendly;** EXTERRA is different. A truly safe, environmentally friendly way to eliminate termites, EXTERRA uses a termite's natural instincts against them, eliminating the attacking termites AND their whole colony.
- ▶ **Total Security;** Protects from the invasion of termites, continually. Even after the colony is eliminated, EXTERRA Stations guard using the natural power of CO₂, monitoring for future invasions without the ongoing need to reapply chemicals. EXTERRA provides a long term termite solution that's easy on both you and the environment.
- ▶ **EXTERRA and Australian Wildlife Conservancy;** Partners for Life. When you install the environmentally friendly EXTERRA Termite Interception and Baiting System, you will be supporting Australian Wildlife Conservancy.
- ▶ **REQUIEM[®];** is the most palatable termite bait in the world, it is truly irresistible to termites. Housed within the EXTERRA Station, it is this greatly superior palatability that makes EXTERRA the number one system in the world.
- ▶ **EXTERRA;** is safe for you, your family, pets and nature. EXTERRA focuses on total termite colony elimination without chemicals, guaranteeing the most effective results.
- ▶ **FOCUS Termite Attractant[™];** EXTERRA is the only system that uses naturally generated CO₂ to attract the termites into the Stations to guarantee quicker interception and better results.
- ▶ **Larger Stations;** Preferred by termites to further improve performance.

REQUIEM PRODUCT DETAILS

Active Ingredient:	1.0 g/kg chlorfluazuron
Insecticide Group:	Insect growth regulator
Formulation Type:	Cellulose based bait
Pests Controlled:	Subterranean termites

Code: FOCUS Termite Attractant (ENU110214), REQUIEM Termite Bait (ESU100127)
Reg. No. (FOCUS L8765 and REQUIEM L8796 Act No. 36 of 1947)

PERFORMANCE

In-ground Stations containing eucalypt timber interceptors are placed in-ground to intercept foraging termites and protect the property. Above-ground Stations are the preferred approach when termites are already active in the property. REQUIEM[™] Termite Bait is placed in the sealed station when it is installed. Above-ground Stations speed up the process of colony elimination. After the termite colony is eliminated, the Above-ground Stations are removed.

When the termites are intercepted, they are easily detected in the EXTERRA Stations. The unique (patented) design allows for termites to be seen without disturbing them. And the termites are not disturbed when the REQUIEM Termite Bait is added either. REQUIEM Termite Bait is highly palatable and consumed in preference to timber. In fact, termites can't resist REQUIEM, leading to the colony's quick demise.



FUMITHOR™ HYGIENE

DISINFECTANT SMOKE GENERATOR

FUMITHOR HYGIENE is a highly effective and unique method for improved sterilisation, used extensively throughout Europe. It's a low toxic, dry smoke disinfectant with potent bactericidal, virucidal and fungicidal properties, the perfect hygiene solution for modern industry and society.

FUMITHOR HYGIENE KEY FEATURES

- ▶ Uniquely uses two different active ingredients for improved results.
- ▶ A broad-spectrum microbicide, effective against all vegetative bacteria, fungi, and viruses, it is also sporicidal.
- ▶ Optimal effective use of small quantities of disinfectant which minimises any impact on the environment while maximising results.
- ▶ Disinfectant is deposited everywhere (vertical, horizontal and underside of horizontal surfaces) which ensures a more thorough treatment.
- ▶ Easy to treat inaccessible areas - roofs, false roofs, nooks and crannies, etc.
- ▶ Lower operator and worker exposure to disinfectants makes it safer.
- ▶ It does not increase the humidity of the treated rooms meaning fungal growth is not encouraged.
- ▶ Effective treatment of any enclosed area.

FUMITHOR HYGIENE PRODUCT DETAILS

Active Ingredients:	35 g/kg glutaraldehyde 200 g/kg ortho-phenylphenol
Formulation Type:	Smoke generator
Pests Controlled:	<p>Viruses including: avian reovirus, avian rotavirus, infectious bronchitis, Pseudorabies virus, infectious bursal disease, avian influenza, Newcastle disease, porcine reproductive respiratory syndrome, hog cholera = HC, avian laryngotracheitis, Marek's disease virus, human Corona virus.</p> <p>Bacteria including: Aeromonas punctata, Bacillus mycoides, Bacillus subtilis, Desulfohalobium desulfuricans, Enterobacter aerogenes, Escherichia coli, Leuconostoc mesenteroides, Proteus mirabilis, Pseudomonas fluorescens, Pseudomonas aeruginosa, Staphylococcus aureus, Listeria monocytogenes, Mycobacterium farreum, Propionibacterium acnes, Salmonella choleraesuis, Bacillus cereus, Legionella pneumophila, Klebsiella aerogenes, Klebsiella pneumoniae, Desulphovibrio desulphuricans.</p> <p>Yeasts & fungi including: Candida albicans, Candida krusei, Rhodotorula mucilaginosa, Rhodotorula rubra, Saccharomyces bayanus, Saccharomyces cerevisiae, Torula utilis, Alternaria tenuis, Aspergillus flavus, Aspergillus niger, Aspergillus terreus, Aspergillus ustus, Chaetomium globosum, Mucor racemosus, Penicillium brevicale, Rhizopus stolonifer, Thielaviopsis monocorymbosa, Thielaviopsis crassa, Stachybotrys atra, Penicillium funiculosum, Trichoderma viride.</p>
Pack Size/ Code:	25 g (CHEFS1006), 50 g (CHEFS1013), 100 g (CHEFS1007), 400 g (CHEFS1008), 1 kg (CHEFS1012)

Reg. No. 5GNR629 / 289759 /140 / 1032 NRCS

PERFORMANCE

Glutaraldehyde is an organic compound that is highly effective as a disinfectant/sterilant and widely used in medical and surgical fields. Ortho-phenylphenol is an organic compound and a powerful biocide with strong bactericidal and fungicidal properties. It is commonly used as a general surface disinfectant in households, hospitals, nursing homes, farms, laundries, barber shops, and food processing plants. Together they provide a complete solution to your needs for a germ free environment.

FUMITHOR HYGIENE is ideal for enclosed areas in ANIMAL HEALTH poultry, egg production, animal breeding facilities, kennels; PUBLIC HEALTH health institutions and premises, medical centres, clinics, surgery areas, ambulances, saunas, gyms, pools, schools, hotels, cinemas, theatres, libraries, warehouses, offices, homes; FOOD INDUSTRY bakeries, mills, slaughter houses, food processing areas, food and vegetable storage; CROP PROTECTION post-harvest, silos, warehouses, ships, greenhouses, cold stores, containers, etc...

AVITHOR™

BIRD MANAGEMENT SYSTEMS

Bird control made simple, AVITHOR leaves buildings protected and the birds safe and unharmed.



AVITHOR E4 DETERRENT SPIKES



Protects against most bird species in medium or high pressure areas.

Once fitted, AVITHOR DETERRENT SPIKES form a virtually invisible barrier to deter birds from landing or nesting on the fitted surfaces, while causing them no harm.

Description

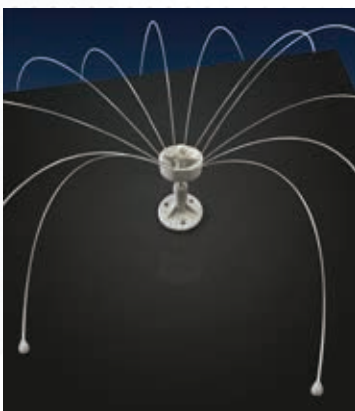
Spikes in stainless-steel / Steelinox® / Steelinox®+
Highest-quality Stainless Steel, Spike Diameter 1.3 mm; with UV Stabilized Polycarbonate Base.

85 mm Low Height, 125 mm High Height, 130 mm Width, 500 mm Length.
Carton contains 120 x 500 mm runs (total 60 m), weight approx 12 kg.

AVITHOR DETERRENT SPIKES are manufactured using non-corroding materials.



AVITHOR DADDI LONG LEGS BIRD DETERRENT SYSTEM



Protects against most large bird species in low or medium pressure areas.

The AVITHOR DADDI LONG LEGS™ Bird Deterrent is designed to prevent birds from landing in hard to protect areas. Ideal for open spaces such as flat roofs or air conditioning units, as well as other situations such as domed or pointed roof peaks, and other areas where alternatives such as spiking or netting are too difficult or not possible.

The thin, stainless steel rods rotate in the breeze and wave menacingly, interfering with birds as they attempt to land. Designed to be as discrete as possible DADDI LONG LEGS is almost invisible from a distance of 20 m or more. Being inconspicuous the DADDI YONG LEGS can be installed in high traffic or public areas with little risk of it causing offense by its appearance.

The DADDI LONG LEGS is for the safety conscious, the stainless steel rods are fitted with plastic tips to ensure no injury to birds, humans or other animals.

Available in three sizes

1.2 m / 1.8 m / 2.4 m

AVITHOR E-TRACK



Sparrows



Starlings



Pigeons



Gulls



Seagulls

Protects against all bird species in low, medium or high pressure areas.

AVITHOR E-TRACK has changed the face of the bird control industry. One product is able to protect a wide variety of surfaces from all bird species, while at the same time being virtually invisible, and incredibly durable.

E-Track protects straight ledges, and curves to easily to protect sign letters. Jumpers snap quickly to the track, making it easy to power multiple tracks. A solar charger unit mounts to the building and sends intermittent power down the two conductors.

Quick connectors are used every 16 m, or wherever else connections are needed. Corner Quick Connectors make 90 degree angles a snap.

AVITHOR E-TRACK comes in a range of colours in 15 m rolls. A full range of accessories are also provided.



GORILLA RODENT TRAPS AND NARA LURES

WORLD'S TOUGHEST AND MOST HUMANE TRAPS WITH ALLERGEN-FREE MONITOR FOR RATS AND MICE

Many food standards prohibit the use of anticoagulants for monitoring purposes. Most common baits are prone to mould formation in damp areas. NARA Lures solve these problems and Gorilla traps with CE certification provide a unique humane control solution.



GORILLA RODENT TRAPS AND NARA LURES KEY FEATURES

- ▶ **Strongest mouse traps;** Bait socket made especially for NARA® Lures. High quality springs delivering most humane capture of mice.
- ▶ **Most humane rat trap;** Strongest springs available for humane kill of rats. Compliant with BANANA adapter for eMitter BEEP. Bait; socket made especially for NARA® Lures.
- ▶ **Emitter Beep;** Pest control often requires traps to be placed in difficult to reach rodent harbourages that are costly to inspect and the client needs instant notification of a rodent capture. One easy answer is the eMitter BEEP. A super simple but highly reliable and effective audio warning sounds when a rodent trap has potentially caught a rodent.
- ▶ **Traps fit most stations;** Place traps stand alone or in a RODENTHOR Station.
- ▶ **NARA Lures;** are designed to fit into the Gorilla Traps. No other beats NARA Lure from 3 months up to 12 months long lasting efficacy in a variety of different aromas your professional aid for long-term performance. Professionals now rely upon NARA Lure is the most hygienic and long-lasting way to bait traps. No cleaning up afterwards and no fast decrease of efficient monitoring with up to 12 months of non-stop activity.

GORILLA RODENT TRAPS AND NARA LURES PRODUCT DETAILS

Gorilla Trap - Rat	RDTF1011
Gorilla Trap - Mouse	RDTF1012
NARA Lure Fish	RDTF1002
NARA Lure Meat	RDTF1003
NARA Lure Vanilla	RDTF1004
NARA Lure Chocolate	RDTF1005
eMitter BEEP	RDTF1013



eMitter BEEP on GORILLA TRAP

PERFORMANCE

The safest most effective options for the food industry.

NARA SPRAY

ATTRACTIVE SPRAY-MONITORING FOR RATS AND MICE

Spray NARA Spray onto your stations and lay a trail towards them in order to improve your results.



NARA SPRAY KEY FEATURES

- ▶ **Supports non-toxic monitoring;** By allowing you to leave a trail to lure rodents to traps and mask the smell of plastic stations.
- ▶ **Beneficial monitor;** Can be used to spray any station to mask smells of plastic or human odours and make the stations more attractive.
- ▶ **Highly attractive;** For all commensal rodents.
- ▶ **With handy holster and belt;** So you can always have it with you when doing rodent work.

NARA SPRAY PRODUCT DETAILS

NARA Spray Meat flavour aerosol	RDTF1001
NARA Spray Chocolate flavour aerosol	RDTF1002

PERFORMANCE

Rodent stations and traps are made of plastic. Plastic has its own chemical smell. If you hold a lighter to anything plastic it smells extremely toxic. This can be compared to what rodents smell when entering a rodent station. Rodents sense of smell is many times better than humans.

NARA Spray seals away the plastic smell, making stations attractive to rodents. The scent lasts around 2-3 months and needs to be renewed, but after repeated application it will slowly soak into stations. Renewing the scent every few months adds fresh attraction to stations luring in new generations of pests.

NARA Spray can also be used to spray a bait-line towards stations, to lure rodents from the bushes or holes into the station. The theory comes from hunting, where hunters drag a dead rabbit to a trap to catch foxes. Scientific trials showed that rodents are curious and follow the smell over large distances, even up to 40 m, with their sensitive noses - like an irresistible cookie trail.

The spray is not only an aroma scent, but it also feeds them with a nutritious vegetable oil, so they feel the desire for more. It consists of 100% vegetable rapeseed oil which is super nutritious for rats and mice and has its own natural scent that is refined with an added meat/beef aroma mixture.

Secure Gel Pads

Secure Stations quickly, but also remove them without damage if necessary. Clients and auditors see them as a hygienic to alternative.

Reusable up to 50 times - Leave no residue or stains - Best for insect monitors or bait boxes - IFS and AIB approved - For permanent or temporary control points - Sticks to most surfaces - Holds up to 1.5 kg.



MUSKIL[®] DUAL ACTIVE RODENTICIDE BLOCKS

FLUO-NP[™]

UV TRACKING TECHNOLOGY

**A GENERATIONAL BREAKTHROUGH
IN RODENTICIDE TECHNOLOGY KILLS
RATS AND MICE FASTER THAN OTHER
RODENTICIDES**

First rodenticide to include fluorescent tracking with palatability optimised to the the rodent's senses of sight, smell and taste.



MUSKIL BLOCK BAIT KEY FEATURES

Contains 10 g Blocks so your bait goes further.

- ▶ **Two actives;** MUSKIL blends two different Second Generation Anticoagulant Rodenticides (SGARs), difenacoum and bromadiolone, together to create a rodenticide that outperforms any other product in the market in terms of speed of kill and reduced risk to pets.
- ▶ **MUSKIL has also been uniquely formulated;** To provide improved palatability. And MUSKIL's FLUO-NP Technology helps overcome Bait Shyness and allows you to track rodents and bait consumption for improved monitoring and higher standards of safety in HACCP managed food establishments.
- ▶ **Power from synergy;** By combining two actives we create a unique product that kills the toughest rodents, including those resistant to other anti-coagulant rodenticides.

The two actives combine together to create a synergistic effect with each dynamically intensifying the effects of the other, to create a more potent solution than either alone, yet at the same time achieving reduced risk to people and pets.

- ▶ **Cost Effective;** MUSKIL kills rodents faster, so often less bait is consumed, which helps reduce the costs of your management programs. Plus the neophobic response to MUSKIL is much lower than with traditional baits using standard dyes, therefore bait is accepted more quickly, more palatable and more efficient in use.
- ▶ **FLUO-NP Technology;** is an abbreviation of Fluorescent No Phobia. The No Phobia aspect is in reference to how MUSKIL overcomes the rodent's natural neophobia, which relates to the commonly observed behaviour of bait shyness, where rodents are reticent to feed on a bait. Numerous field trials and commercial results have proven that MUSKIL can defeat bait shyness.

MUSKIL BLOCK PRODUCT DETAILS

Active Ingredients: 0.025 g/kg bromadiolone, 0.025 g/kg difenacoum
Pesticide Group: Hydroxycoumarins
Formulation Type: All weather block
Pests Controlled: Rats and mice
Pack Size/ Code: 10 kg (RDTM1000), 3 kg (RDTM1001)

Reg. No. L10359 Act No. 36 of 1947

PERFORMANCE

The FLUO-NP contributes to the primary bait acceptance of MUSKIL, thereafter, the formulated ingredients enhance the palatability. MUSKIL has been prepared specifically for Australian and Asian markets and provides improved palatability for our local rats and mice, especially the black rat (*Rattus rattus*). MUSKIL employs high quality aromatic ingredients to entice rodents to the bait coupled with high grade proteins to ensure optimal feeding.

All rodenticides have added colour dyes to deter feeding by birds and other animals with full colour vision. However all the usual dyes used in rodent baits can be detected by rodents and do slightly deter feeding. University trials have shown that the FLUO-NP dyes used in MUSKIL are non-detectable to rodents providing for further improvements in palatability.

RODENTHOR® BLOCK RODENTICIDE

A TRUE SINGLE FEED RODENTICIDE

For use in all situations, against all
pest species of rats & mice



RODENTHOR SOFT BAIT KEY FEATURES

Contains 10 g Blocks so your bait goes further.

- ▶ **Ready to use block bait;** Suitable for use in damp or dry situations in and around industrial, commercial, public services, agricultural and domestic buildings.
- ▶ **Economical block size;** The 10 g block allows more placements, reduces wastage and provides for more effective control of rats and mice.
- ▶ **Works in the toughest situations;** Controls rodents resistant to other anticoagulants, including warfarin, coumatetralyl and bromadiolone.
- ▶ **Irresistible to mice and rats;** This highly palatable extruded block uses the highest quality ingredients to ensure it is irresistible to rats and mice
- ▶ **Clever design;** The block has been designed with a central hole for easy mounting in various situations and several sharp corners to increase its attractiveness to rodents by providing numerous gnawing edges.

RODENTHOR SOFT BAIT PRODUCT DETAILS

Active Ingredient:	0.05 g/kg brodifacoum
Pesticide Group:	Hydroxycoumarin
Formulation Type:	All weather block
Pests Controlled:	Rats and mice
Pack Size/ Code:	5 kg (RDTB1038), 10 kg (RDTB1039)

Reg. No. L9396 Act No. 36 of 1947

PERFORMANCE

RODENTHOR Block Rodenticide is a tough, efficient eliminator of rats and mice. The extruded block has effective weather resistance to make it survive in most environments. One feed is all that is required to kill a rodent. The 15 g block uses the most potent rodenticide on the market, brodifacoum, and is optimised to tackle rodents without using excessive bait, so your purchase goes further.

Nails or wire may be used to fix blocks to prevent them being removed by rodents.

Alternatively use RODENTHOR Block Rodenticide in the Ensystex RODENTHOR Bait Stations such as the PETI, ALPHA, BETA or PILOT Stations to enhance effectiveness.



RODENTHOR® SOFT BAIT

FATAL ATTRACTION

Irresistible to rodents, and a single feed is lethal to every rodent, every time.



RODENTHOR SOFT BAIT KEY FEATURES

Contains 10 g Sachets so your bait goes further.

- ▶ **Made from the finest ingredients;** RODENTHOR's soft pasta base is by far the most palatable bait presentation for rodents.
- ▶ **Each 15 g sachet is enough to kill a rat;** Whilst ensuring your purchase goes further.
- ▶ **Attractive;** The edible sachets allow the release of the carefully selected aromas which draw rodents to the bait. They then readily feed on the high protein, moist pasta-based bait which provides both a high quality food source, and moisture.

RODENTHOR SOFT BAIT PRODUCT DETAILS

Active Ingredient:	0.05 g/kg brodifacoum
Pesticide Group:	Hydroxycoumarin
Formulation Type:	Soft paste bait in an edible sachet
Pests Controlled:	Rats and mice
Pack Size/ Code:	3 kg (RDT1004)

Reg. No. L9586 Act No. 36 of 1947

PERFORMANCE

RODENTHOR Soft Bait is a tough, efficient eliminator of rats and mice. One feed is all that is required to kill a rodent. The 15 g bait uses the most potent rodenticide on the market, brodifacoum, and is optimised to tackle rodents without using excessive bait, so your purchase goes further. Due to it being the most palatable bait formulation on the market, this should always be considered as your first choice for rodent baiting programs, especially at difficult sites.





RODENTHOR®

RAT AND MOUSE STATIONS

**ALL STATIONS CAN BE PERSONALISED
WITH YOUR LOGO PRINTED DIRECTLY
ONTO THE STATION.**

ALPHA RODENT STATION

Tunnel Bait Station

Sturdy, long lasting station is suitable for both rats and mice and is a cost-effective professional and long-lasting alternative to cardboard rodent boxes. Ideal for placement in roof voids, behind large appliances, etc. Comes fitted with bait rod holder and single key locking system. Rats in particular like to 'run-through' stations of this nature since they can clearly see the exit.

- Dimensions: 240 x 105 x 95 mm



BETA RODENT STATION

Compact Station for Rats and Mice

Our most popular model with child-resistant features, double lock system, steel rod and a removable tray for easy cleaning. This station also comes with a wall mounting bracket kit.

- Dimensions: 230 x 190 x 95 mm



CORAL STATION

Ultra Compact Station for Rats and Mice

Very cost effective, durable, versatile and ultra compact to fit just about anywhere. The side opening lid offers greater installation flexibility and single locking mechanism provides ease of operation. Comes with steel rod, wall mounting bracket kit and removable tray for easy cleaning.

- Dimensions: 230 x 125 x 75 mm



RODENTHOR MAXX – CURVE

Compact Station for Rats and Mice

A curved lid gives more room for rodents to feed. Full size for rats and mice, fully lockable, it comes with a seal to protect the lock. Wall security mount included. Fits rodenticide Blocks or sachets on vertical or horizontal rods, includes tray. Fits RODENTHOR Gorilla Humane Rat Trap with IPM SQUARE – RAT Monitor. Also available with clear lid.

- Dimensions: 230 x 182 x 120 mm



RODENTHOR MAXX – FLAT

Compact Station for Rats and Mice

This might be considered the perfect rodent station. Full size for rats and mice, fully lockable, it comes with a seal to protect the lock. Wall security mount included. Fits rodenticide Blocks or sachets on vertical or horizontal rods, includes tray. Fits RODENTHOR Gorilla Humane Rat Trap. Also available with clear lid.

- ▶ Dimensions: 230 x 182 x 98 mm



NEPTUNO RODENT STATION

Versatile Mid-size Station for Rats and Mice

A truly multi-purpose station for use in many different configurations. Available with feeding trays, vertical and horizontal feeding rods for bait, water container, large snap trap and more.

- ▶ Dimensions: 235 x 185 x 90 mm



BORA STATION

High-domed Stations is perfect when using traps for rats.

This Station is ideally suited for use with our high-power, humane Gorilla Traps and features a child-resistant, double lock system, two horizontal wires to hold the bait, two inner trays, key and a wall adapter. Made of sturdy polypropylene.

- ▶ Dimensions: 155 x 255 x 325 mm



PETI MOUSE STATION

Compact Station for Mice

Highly durable mouse station capable of housing 2 blocks or soft bait sachets with single key lock for safety.

- ▶ Dimensions: 125 x 100 x 40 mm



ERIS MOUSE STATION

SECURE Mouse Station

This is a small, discreet, water-proof, Station with same secure locking system as our other Stations that comes together with our patented security wall mount adaptor.

Rodenticide blocks can be secured vertically with the lid opening laterally for easier servicing.

► Dimensions: 173 x 69 x 52 mm



ROCK STATION

Rock Station

Placed around the perimeter of your landscaped gardens, you might never notice this wasn't a natural rock. Designed for baiting both rats and mice, it blends in with the outdoor environment.



MULTI-CATCH MOUSE

Multi-catch Bait Station

Heavy duty, rugged metal /plastic trap for mice. Multi-catch traps should be inspected every 24-hours, and this model comes with a clear lid to allow for quick and easy checking.

► Dimensions: 270 x 170 x 50 mm



VECTOTHOR™ LIGHT TRAPS

FLY CONTROL RANGE

VECTOTHOR delivers European design excellence in combination with university proven performance benefits to create the most effective flying insect management system on the market.



Leading edge solutions that guarantee the highest catch rates make VECTOTHOR Flying Insect Killer Light Traps the premium choice for HACCP food management programs, the hospitality industry, hospitals, indeed for anyone who wants peak performance in their flying insect management program.

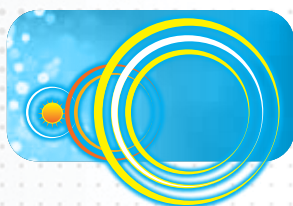
ASTRON UV-A LAMPS - EUROPEAN MADE PRECISION



With the UV-A light output optimised to perfectly match the house fly's vision spectrum, ASTRON lamps guarantee you catch more flies more quickly.

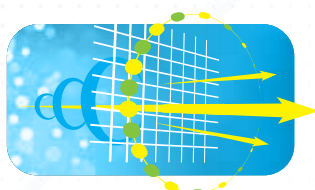
- * CE-Approved.
- * acc. IEC 60.335-259 International Standard for Insect Exterminators through TUV-Rheinland.
- * Compliant with RoHS Standards (Removal of Hazardous Substances).
- * Approved for use in HACCP (Hazard Analysis at Critical Control Points) Approved Food facilities.
- * Shatter-proof coating from DuPont.

NATURAL UV-A SUNLIGHT TECHNOLOGY™



VECTOTHOR uses an electronic ballast at 10,000 cycles per second so the lamp is indistinguishable from natural sunlight, thus providing greater attraction. Other lamps feature a mechanical starter and ballast that operates at 50 cycles per second. This means flies see the UV-A light as a rapidly flickering light which is unlike natural sunlight.

NATURAL CONTRAST GRID™



This provides 30% improved performance over conventional units since it reflects light onto the landing spot thereby stimulating the natural landing behaviour of flying insects.

OSPREY

Recommended for use in shops and restaurants and dry industrial environments.

The unit can be wall mounted; The separate mounting strip offers easy maintenance & service. The OSPREY has a housing made of durable ABS plastic and white powder coated steel. Product code: (VECL1016)



Area coverage:	50 - 80 m ²
Light source:	2 x 15 W shatterproof ASTRON UV-A lamps
Catch type:	By means of Temperature Optimised glue board
Lamp life time:	17,500 hrs
Protection rating:	IP 20 (dust proof)
Dimensions (LxWxD):	470 x 325 x 100 mm
Mounting position:	Wall mounted

PEREGRINE

Recommended for use in kitchens, food production areas, and more.

The unique louvers in the VECTOTHOR PEREGRINE coupled with our High Frequency Electronic Light Pulse, allow us to create a temperature trap targeted to 27o - 28o Celsius (81o - 82o Fahrenheit) - the ideal temperature for most flying insects. Product code: (VECL1015)



Area coverage:	120+ m ²
Light source:	3 x ASTRON 15w RoHS certified shatterproof UV-A lamps
Catch type:	Temperature optimised glueboard with silicone paper cover
Lamp life time:	One (1) year
Protection rating:	IP 20 dust-proof
Dimensions (LxWxD):	520 x 150 x 365 mm
Mounting position:	Wall mounted
Product Code:	VECL1015

PEREGRINE 3

Recommended for the toughest conditions and most severe fly problems in kitchens, food production areas, and more.

With its totally unique, world first design and fly trapping features, the PEREGRINE is easy to service, stylish and effective, featuring European design build standards and a diffuse light output. Product code: (VECL2017)



Area coverage:	120 m ²
Light source:	3 x 15 W shatterproof ASTRON UV-A lamps
Catch type:	Temperature optimised glueboard
Lamp life time:	17,500 hrs
Protection rating:	IP 21 (drip-proof)
Dimensions (LxWxD):	470 x 325 x 100 mm
Mounting position:	Ceiling and wall mounted

FALCON

Recommended for use in homes, offices, shops and restaurants.

The FALCON is constructed in such a way that the UV-A light is directed upwards. The FALCON has an all metal housing and uses a powerful UV-A lamp to lure insects into its trap. Product code: (VECL1015)



Area coverage:	35 m ²
Light source:	1 x 18 W ASTRON PL UV-A lamp
Catch type:	Temperature Optimised glue board
Lamp life time:	9,000 hrs
Protection rating:	IP 20 (dust proof)
Dimensions (LxWxD):	440 x 190 x 200 mm
Mounting position:	Wall mounted

BUZZARD

Recommended for use in shops and restaurants and dry industrial environments.

Wall mounting insect control unit suitable for trapping flying insects by means of 2 powerful UV-A lamps. Product code: (VECL2019)



Area coverage:	90+ m ²
Light source:	2 x 15 W ASTRON UV-A lamps
Catch type:	Temperature Optimised glue board
Lamp life time:	9,000 hrs
Protection rating:	IP 20 (dust proof)
Dimensions (LxWxD):	538 x 103 x 311 mm
Mounting position:	Wall mounted.

MERLIN 45E

Recommended for use in homes, offices, shops and restaurants.

The unit can be mounted in multiple positions onto the wall or the ceiling or it can even be used free standing. The MERLIN 45E has a stainless steel front grid, with the housing made of durable ABS plastic and white powder coated steel. Product code: (VECL1003)

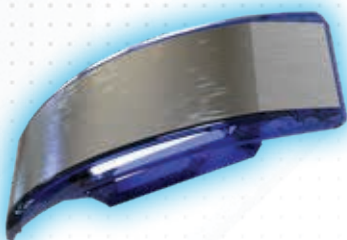


Area coverage:	45 m ²
Light source:	1 x 15 W shatterproof ASTRON UV-A lamp
Catch type:	Temperature Optimised glue board
Lamp life time:	17,500 hrs
Protection rating:	IP 21 (drip proof)
Dimensions (LxWxD):	550 x 120 x 120 mm
Mounting position:	Wall, ceiling or cabinet mounted, or free standing

KITE

Recommended for use in homes, offices, shops and restaurants.

30% improved performance over conventional units due to its unique design, which reflects the light onto the landing spot thereby stimulating the landing behavior of flying insects. Product code: (VECL2018)



Area coverage:	35+ m ²
Light source:	1 x 18 W RoHS PL ASTRON UV-A lamp
Catch type:	Temperature optimised glue board
Lamp life time:	9,000 hrs
Protection rating:	IP 20 (dust proof)
Dimensions (LxWxD):	420 x 136 x 136 mm
Mounting position:	Wall mounted

HARRIER / SEA HARRIER

Recommended for use in professional or industrial environments.

The HARRIER can be flag mounted on the wall or ceiling mounted. Mounting is a breeze with the snap-on mounting bracket. The HARRIER has an aluminium housing, which makes the unit both light and strong. Product code: (VECL1018)

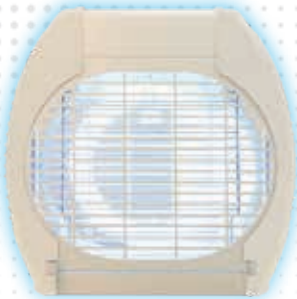


Area coverage:	100 - 150 m ²
Light source:	4 x 15 W shatterproof ASTRON UV-A lamps
Catch type:	Temperature Optimised centrally located glue board
Lamp life time:	17,500 hrs
Protection rating:	HARRIER IP 21 (drip proof) / SEA HARRIER IP 65 (hose proof)
Dimensions (LxWxD):	500 x 340 x 160 mm
Mounting position:	Wall, flag or ceiling mounted

CONDOR 40 HT

Recommended for use in offices, non-food shops and non-food warehouses.

The unit is constructed in such a way that the UV-A light emission is 360 degrees around the unit. The CONDOR 40 HT has an all metal housing and uses a powerful UV-A lamp to lure insects into its trap. Product code: (VECL1006)



Area coverage:	40 m ²
Light source:	1 x 22 W Phillips UV-A lamp
Catch type:	Short circuit proof high tension grid
Lamp life time:	9,000 hrs
Protection rating:	IP 21 (drip proof)
Dimensions (LxWxD):	370 x 370 x 140 mm
Mounting position:	Wall mounted, ceiling mounted or free standing

BLUETOOTH UV-TESTER



THE LATEST UV INNOVATION WORKS WITH LED & FLUORESCENT LAMPS.

UV-A TESTER

The new Bluetooth UV-A tester has been developed to check the status of UV-A lamps out in the field. It can be used by service technicians, sales persons, and also by clients and auditors. It works for LED lamps and fluorescent lamps.

This is a great tool for showing potential clients just how much more powerful the VECTOTHOR ASTRON lamps are when compared to other lamps in the market.

VECTOTHOR OMNIVEO™

SMARTER FLYING INSECT CONTROL



VECTOTHOR OMNIVEO KEY FEATURES

A new generation of insect control units suitable for real time monitoring of flying insects using either LED or fluorescent lamps.

Uniquely the same unit can be equipped with either LED or fluorescent lamps. And each model is available as either IP20 (dust-proof) or IP65 (hose-proof). This means you can purchase the fluorescent model now, and then later, add LED lamps into the same unit! They are Easy to service, stylish and effective.

Smart control

The optional Omniveo Smart Control works through new innovations. By means of a high-speed camera. The camera records insects which are lured into the trap onto a glue board by an ultraviolet light source. The data is immediately forwarded to the user.

This is possible thanks to worldwide connectivity over the LTE-M network and the IoT platform named Cockpit.

Real-time monitoring of insects is a huge leap forward.

Glue boards

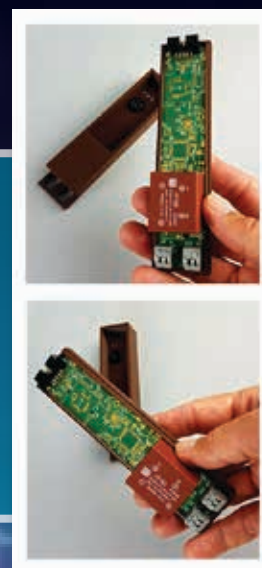
Insects are caught on a glue layer, which preserves them over time. The caught insects can be counted, and insect species can be analysed, which offers clear advantages in an IPM approach.

ASTRON LED lamps (optional)

LED technology offers clear advantages in terms of efficiency (lower energy consumption) and its footprint (compactness).

VECTOTHOR OMNIVEO PRODUCT DETAILS

Omniveo 2 lamps IP20	VECL3000	2x 15 W ASTRON SP
Omniveo 2 lamps LED IP20	VECL3001	2x ASTRON 15 W LED SP
Omniveo 2 lamps IP65	VECL3002	2x 15 W ASTRON SP
Omniveo 2 lamps LED IP65	VECL3003	2x ASTRON 15 W LED SP
Omniveo 3 lamps IP20	VECL3004	3x 15 W ASTRON SP
Omniveo 3 lamps LED IP20	VECL3005	3x ASTRON 15 W LED SP
Omniveo 3 lamps IP65	VECL3006	3x 15 W ASTRON SP
Omniveo 3 lamps LED IP65	VECL3007	3x ASTRON 15 W LED SP



VECTOTHOR™



FLYING INSECT CONTROL LIGHT TRAPS

ASTRON™ ECO-LED LAMPS

LIGHTING UP THE FUTURE FOR INSECT CONTROL

VECTOTHOR DYNAMIC OSCILLATION PULSE TECHNOLOGY™

This unique technology is essential to provide fly trapping performance equal to, or better than, that provided by fluorescent lamp fly trap models.

A highly proprietary logarithm has been developed to cause fluctuations in the light beam that are imperceptible by people, but that greatly influence and improve fly catch rates.

Early in the development process of producing high-performance LED lamp, it became clear that since, unlike fluorescent lamp, LED lights produce

a constant flow of light; fly landing behaviour was negatively impacted by LED lights and, as a direct consequence, kill rates were reduced. This led to the development of our VECTOTHOR Dynamic Oscillation Pulse Technology™ to provide class leading fly killing performance.

Environmentally Responsible:
Use 50% less power than traditional models, with big savings in energy bills



TECHNICAL DATA 15 WATT ASTRON LED HF UV-A LAMP

The ASTRON 15 Watt LED UV lamp offers the same UV-A output as a traditional 15 Watt UV-A lamp, but does it with approx. 50% of the incoming power. This offers huge cost savings. And with a lifetime of over 3 years, the impact on the environment is significantly lower.

And of course, the lamp meets the strict quality controls of Ensysyex and meets all relevant standards.

Technical name ASTRON LED 15 Watt LED HF UV lamp

Power consumption (W):	8	Shatterproof lamp sleeve:	YES
UV-A power (W):	2.7	RoHS compliant:	YES
Lifetime (hr):	20,000	EN 60335 2.59 compliant:	YES
		Wavelength emission:	340 – 450 nm
		Energy saving per lamp / year:	61.33 kW at continuous usage

RESIDENTIAL / PROFESSIONAL UNITS



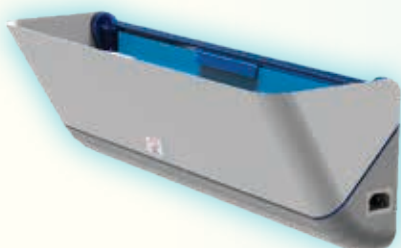
VECTOTHOR OSPREY LED

2 x 15 W ASTRON LED lamps covers 100+ sq m.

TECHNICAL SPECIFICATIONS

Catch specifications:	Temperature optimised glueboard with silicone paper cover
Weight:	approx. 4 kg with light tubes fitted
Material:	Coated steel casing, cover/grid ABS plastic

Guarantee:	Two (2) years
Dimensions (LxWxD):	470 x 325 x 100 mm



VECTOTHOR FALCON LED

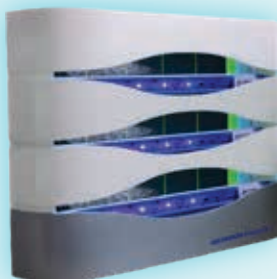
1 x 15 W lamps covers 60+ sq m.

TECHNICAL SPECIFICATIONS

Area coverage:	60+ m ²
Catch specifications:	Temperature optimised glueboard with silicone paper cover
Weight:	approx. 4 kg with light tube fitted
Material:	Powder coated metal

Guarantee:	Two (2) years
Dimensions (LxWxD):	700 x 180 x 150 mm

THE RANGE THAT'S LIGHTING THE FUTURE
OF FLY CONTROL, USING VECTOTHOR'S
DYNAMIC OSCILLATION PULSE TECHNOLOGY™



VECTOTHOR PEREGRINE³ LED

3 x 15 W ASTRON LED lamps covers 150+ sq m.

TECHNICAL SPECIFICATIONS

Catch specifications:	Temperature optimised glueboard with silicone paper cover
Weight:	approx. 6 kg with light tubes fitted
Material:	Coated steel casing, cover/grid ABS plastic

Guarantee:	Two (2) years
Dimensions (LxWxD):	520 x 150 x 365 mm



VECTOTHOR BUZZARD LED

2 x 15 W lamps covers 100+ sq m.

Catch specifications:	Temperature optimised glueboard with silicone paper cover
Weight:	approx. 4 kg with light tubes fitted
Material:	Coated steel casing, cover/grid ABS plastic

Guarantee:	Two (2) years
Dimensions (LxWxD):	520 x 150 x 365 mm

INDUSTRIAL / LARGE COMMERCIAL



INSECT BAIT STATIONS

Chemical free Professional Pest Management monitoring systems

HYMENOPHOR ANT BAIT STATION



Durable device for easy mounting

The unique slide mounting system makes the HYMENOPHOR Ant Bait Station very easy to service, while user selectable insect entry points ensure versatility regardless of the station location. Moulded from food grade polypropylene, these rugged, reusable Stations come complete with a self adhesive strip for the 'slide-mount' backing plate or a zip tie option allowing for any required mounting situation.

Product Code: (CHEHY1000)

BLATTATHOR COCKROACH TRAP



Attractive, disposable cardboard trap

Has a low profile making it easy to place in a variety of situations. Each BLATTATHOR Cockroach Trap is versatile and can be used as either a single large Trap, in areas of higher infestation, or it can be separated to form three small Monitor Traps, allowing you the opportunity to make more placements, which is particularly useful when monitoring to determine the effectiveness of your control program.

The attractants are incorporated into the glue, to better suit the requirements of HACCP. However, the release technology and attractants used ensures they keep attracting cockroaches and stored product insects for a good three months or more. The glue board will catch and retain nymphs and adults of all important cockroach pest species, including Periplaneta species.

Product Code: (CHEBT1000)

BLATTATHOR COCKROACH / INSECT MONITOR



Heavy-duty Reuseable Monitor with Glueboard.

Designed for use in any position, even on its side, or upside down in a cupboard. Angled entry ramps ensure insects enter first time. This re-usable Monitor can be used again and again, in fact we recommend it. The glueboard will catch and retain nymphs and adults of all important cockroach pest species, including Periplaneta species. During routine services the glueboard is easily replaced.

When cockroaches gather they release pheromones which attract even more cockroaches. These natural aggregation pheromones account for a complex cocktail of more than 150 chemicals, so mimicking this effect is almost impossible. Research shows that cockroach deposits are the main repository for the pheromones and they continue to be attractive for a year or more.

The BLATTATHOR Insect Monitor ensures that by replacing only the glue board these very effective, natural aggregation pheromones remain; so you have the dual action of a powerful lure combined with the additional attractiveness of natural pheromones.

Product Code: (CHEBI1000)

Refills: Pack of 100 CHEBI1015

DUAL POWERLIGHT

Rechargeable dual Flashlight - UV-A / White light

The most powerful flashlight
available for the pest control
industry offering white light and
UV-A light.



The powerful white light is ideal for all your professional inspection needs, whilst the second UV-A light is perfect for scorpions, rodent inspections, to reveal urine stains, and bed bug treatments to reveal the presence of eggs.

This torch is as rugged as they come, protected against water immersion to 1 m, drops from 1.5 m, scratch-proof, temperature-resistant to 100 degrees Celsius and manufactured to ISO9001 - this is a torch for professionals.

Contents:

- DUAL POWERLIGHT
- Li-ion rechargeable battery
- Multi-charger for mains or in-car charging
- Belt holster



Specification	
Light Source	5 W white Cree LED XPG2 + 5 W UV-A LED
Battery	18650 Li-ion rechargeable battery
Specs	Rated for 20,000 hours (5 years)
Brightness	300 lumens
Working time	5 - 6 hours
Night Reflector	Green Strip lights up in the dark
Weight	184 g
Colour	Black
IP Rating	IPX8 - Protected against water submersion
Body	Aluminum T6061, Premium Type III hard-anodized abrasive finish; scratch-proof.
Electrical supply charger	110-240 V / 50-60 Hz
Dimensions	150 x 35 mm (L x D)

ACCUTHOR GEL GUN

**High Performance,
Adjustable, Stainless Steel
Gel Gun**

The uniquely designed ACCUTHOR Gel Gun sucks the gel out of your gel tubes, ensuring a more accurate distribution and NO dripping.



The ACCUTHOR Gel Gun is fully adjustable so you can control the amount of product dispensed, and it comes complete with a range of different tip sizes to give you total control over droplet sizes. It is a rugged design, constructed from stainless steel to give you many years of accurate use when used with 30 g or 35 g classic professional gel tubes, 5 positions for accurate dosage are available to give you just the right amount of gel for the treatment, ensuring the most precise and cost-effective placement.

Product Code: (EQPA1000)

ACCUTHOR DUSTERS

ACCUTHOR™ PRECISION APPLICATOR

The ACCUTHOR Precision Applicator is designed for use with MAGNATHOR Magnetic Insecticide to lightly apply the MAGNATHOR Magnetic Insecticide into the smallest cracks and crevices. A range of optional accessories are also available including a belt pouch, and an extension tube with nozzle.

Product Code: (EQPA2000)



The 4 Levels of

Customer Engagement

The uniquely designed ACCUTHOR Gel Gun sucks the gel out of your gel tubes, ensuring a more accurate distribution and NO dripping.



ENSYSTEX[®]

LEADING INNOVATION IN PEST MANAGEMENT

ENSYSTEX SOUTH AFRICA (PTY) LTD

CO./MPY REG. NO. 2008/009219/07

**Building 3, The Burns Business Park
12A Jet Park Road, Jet Park
Boksburg GAUTENG 1469**

CALL 080 367 9783

**www.Ensystex.co.za
za_client@Ensystex.com**

BROA3005 4.0 08.22