

ACTIVELY STOP TIME

ON MOSQUITO, FLY, FLEA & COCKROACH DEVELOPMENT

EXOTHOR™ Insect Growth Regulator prevents adult emergence of mosquitoes, house flies, fleas and cockroaches by stopping embryonic development.

- ✔ Stops growth of target pests
- ✔ Eliminates the colony
- ✔ Easy-to-measure granular formulation with less risk of spillage
- ✔ Granules can be added directly to manure for control of house flies
- ✔ Water-dispersible
- ✔ Highly targeted insecticide
- ✔ Very high level of mammalian safety
- ✔ Long-lasting residual activity against juvenile insect stages
- ✔ Non-repellent, no odour
- ✔ Compatible with most Ensysstex adulticides, including ATTRATHOR™, MAXXTHOR™ and BITHOR™

INEVITABLE POPULATION DECLINE OF MOSQUITOES, FLIES, FLEAS AND COCKROACHES

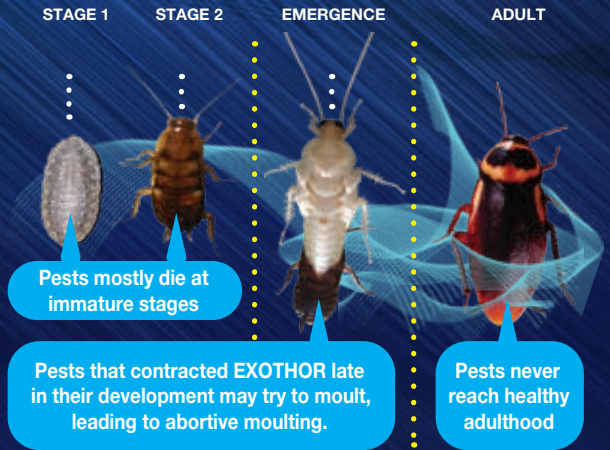


EXOTHOR™ PREVENTS ADULT EMERGENCE OF MOSQUITOES, HOUSE FLIES, FLEAS AND COCKROACHES

EXOTHOR™ contains the active ingredient diflubenzuron, an insect growth regulator which affects chitin synthesis in insects.

EXOTHOR™ inhibits the formation of N-acetylglucosamine, leading to reduced levels of chitin in the cuticle. Cuticular elasticity and firmness are directly affected. The imperfections in the cuticle are most evident at ecdysis (moulting) and lead to abortive moulting.

Thus EXOTHOR™ causes the insect to die in the immature stage (nymphal or larval stage) since a new exoskeleton cannot be formed. In addition EXOTHOR™ stops normal embryonic development.



EASY TO APPLY WATER DISPERSIBLE GRANULE

EXOTHOR™ is the only insect Growth Regulator approved for the control of mosquitoes, flies, cockroaches and fleas; and because it is uniquely formulated as a water dispersible granule it is easier to use and more practical, especially for the control of fly larvae in breeding



Control of Flies

For fly control EXOTHOR™ can either be diluted with water and sprayed at a rate of 500 mL per square metre on the manure or breeding media. More practically, the EXOTHOR™ dry granules can be applied directly to the surface of the manure or fly breeding media. The granules can be incorporated into the media if required, but this is not essential for good results.

Independent trials showed

EXOTHOR™

! "was 100% effective in preventing the further development of flea eggs when treating existing flea infestations."

Control of Fleas & Cockroaches

EXOTHOR™ is applied as a coarse spray to areas of infestation, focusing on cracks and crevices. EXOTHOR™ is an ideal accompaniment to applications of adulticides which will provide a quick knockdown and kill of insect adults, e.g. MAXXTHOR, BITHOR or ATTRATHOR. EXOTHOR™ will provide long-lasting effects in the prevention of future adult emergence and break the breeding cycle.

For internal flea control it is recommended that the premises are first vacuumed and the contents of the vacuum bag removed before treatment. This is particularly important where adult fleas are present. Any pets should be treated with a suitable product registered for that purpose to avoid re-infestation of the treated premises.

Control of Mosquitoes

Apply at an early stage of population development when the majority of the larvae are in the first or second instar. Applications should be repeated when inspection indicates an increase in the number of second and third instar mosquito larvae. Apply in sufficient water to ensure even coverage of the breeding sites.

Ensysstex South Africa (Pty) Ltd
Building 3, The Burns Office Park
12 A Jet Park Road, Jet Park, Boksburg, 1469
Tel: +27 11 894 3845 or 080 ENSYSTEX

Registration No. L11062 of Act No. 36 of 1947

Active Ingredient: Diflubenzuron 200 g/kg

ENSYSTEX™
LEADING INNOVATION IN PEST MANAGEMENT

www.Ensysstex.co.za

PH: 080 367 9783

™ Trademarks of Ensysstex Inc. used under licence by Ensysstex South Africa (Pty) Ltd.

BROEX1002 1.01 07.21