



EFFECTIVE PEST MANAGEMENT

ENSYSTEX[®]
THE INNOVATORS

▶ WHAT IS A PEST?



THE PEST

The Professional **ENSYSTEX**® Solution Today

ENSYSTEX®
THE INNOVATORS

What is a PEST?

Anything that competes with humans, domestic animal for food or water

Injures humans, domestic animals or structures

Spread disease to humans, domestic animals or wildlife i.e harmful to health

What is a PEST?

▶ HEALTH PESTS

- ▶ Cockroaches
- ▶ Rodents
- ▶ Flies
- ▶ Mosquitos

▶ NUISANCE PESTS

- ▶ Ants
- ▶ Bed Bugs
- ▶ Birds
- ▶ Termites
- ▶ Stored product insects



We all know what pests NEED!



FOOD

**IPM:
Deny pests
Access to**



WATER



HARBOURAGE



What is IPM Management?



▶ **Integrated Pest Management (IPM)** is a science-based, common-sense approach for reducing populations of disease vectors and public health pests.

▶ IPM uses a variety of pest management techniques that focus on pest prevention, pest reduction, and the elimination of conditions that lead to pest infestations.

▶ IPM simply means:

▶ Don't attract pests

▶ Keep them out

▶ Get rid of them, eradicate with the safest, most effective methods.

Health & Nuisance Pests

What is the role of the PCO?

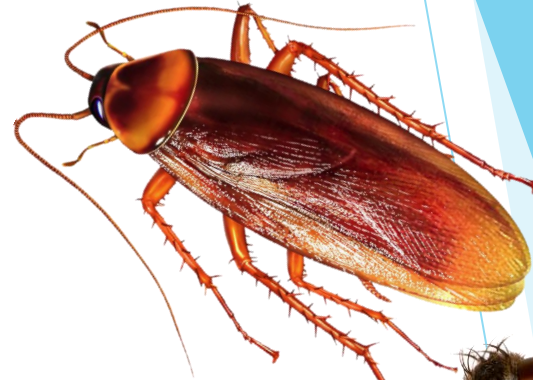
- ▶ Inspection
- ▶ Knockdown
- ▶ Maintenance
- ▶ Control
- ▶ Record
- ▶ Report



ENSYSTEX[®]
THE INNOVATORS

Health Pests

- ▶ Cockroaches
- ▶ Rodents
- ▶ Flies
- ▶ *Biting insects i.e. bedbugs, ticks, mosquitoes, fleas





Health & Nuisance Pests

- ▶ The inspection should identify anything that might cause or allow contamination of food by pests or their activity.
- ▶ Proper Pest Identification
- ▶ Use of historical information
- ▶ Pest Sightings or “complaints”
- ▶ Type of Information gathered on site
- ▶ Trend analysis
- ▶ Surveillance of adjacent properties and suppliers

Health & Nuisance Pests

➤ Are you dealing with a low or high infestation?

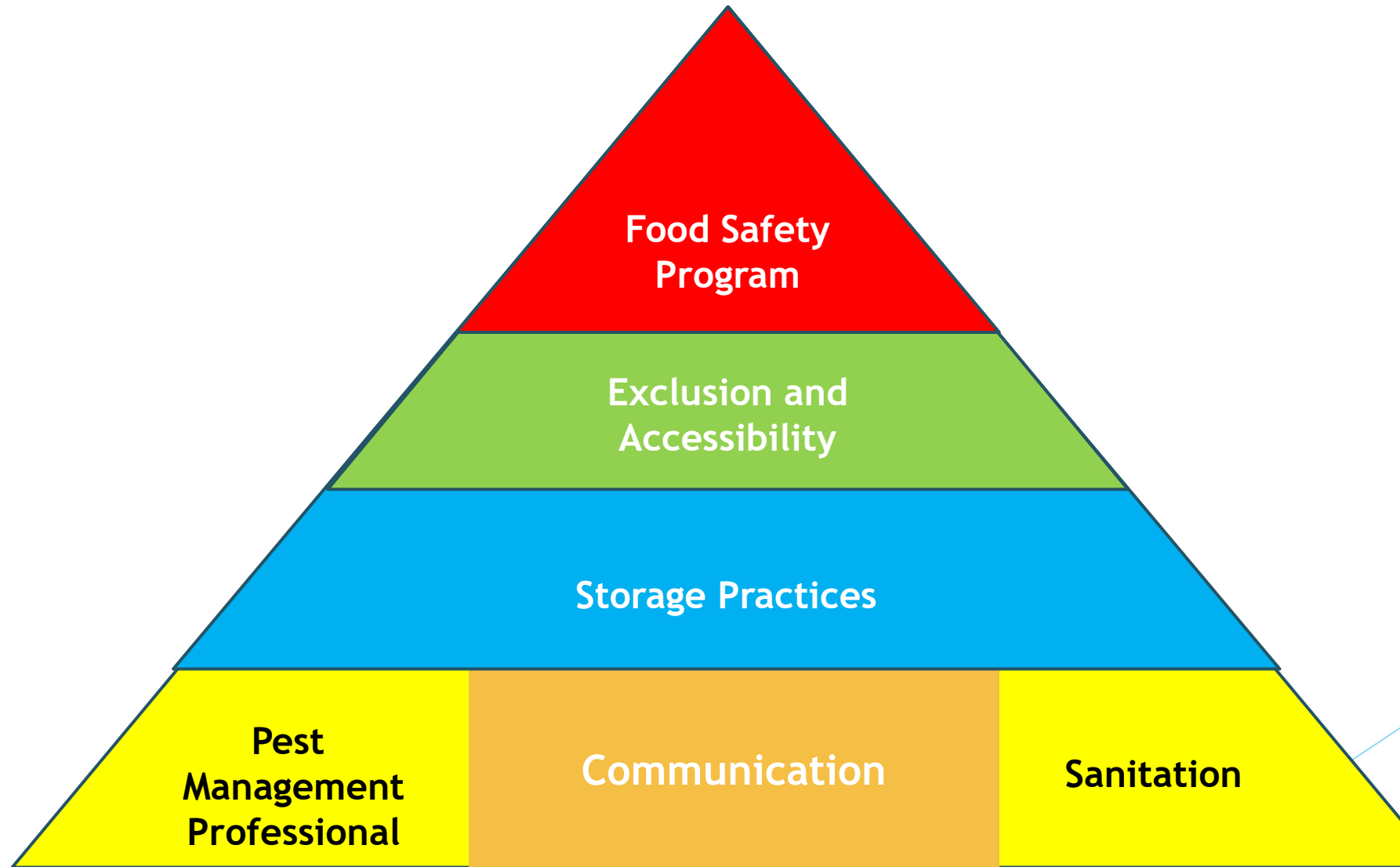
Information required on Pests:

- Species present
- Location
- Numbers
- Extent of infestation
- Risk to food safety
- Proposed control methods

➤ Information on the premises:

- Potential entry routes of pests
- Exclusion recommendations
- Hygiene and housekeeping requirements
- Storage and stock rotation processes
- Risk assessments

Food Safety Program



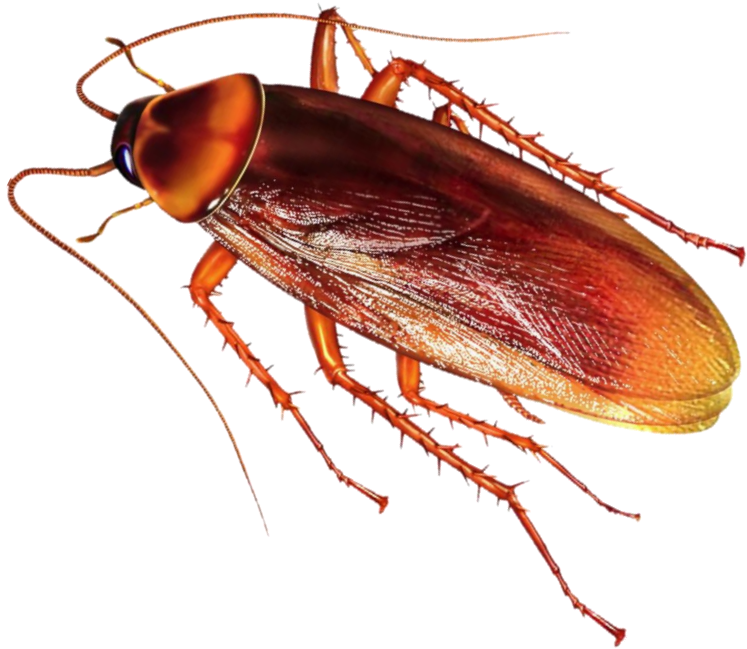
Cockroach Habitat : Where to hunt pests down

- ▶ Cracks & Crevices
- ▶ Appliances
- ▶ Wall and Light fittings
- ▶ Clocks, Posters
- ▶ Storage
- ▶ Fire blanket
- ▶ Dispensing units i.e. soap
- ▶ Lockers
- ▶ Ablutions
- ▶ Hot Water wall mount dispensers
- ▶ Tables, chairs i.e booths
- ▶ Suspended Ceilings
- ▶ Airconditioning units

Know your enemy!

American Cockroach - Periplaneta americana

Red-brown in color with a shiny finish and their size is about 35-40mm long.



German Cockroach - Blattella germanica

Light brown or tan, have two distinctive parallel stripes on the back of their head, and are around 12 to 15 mm long.



Cockroaches - Products and Application Methods

- ▶ Aerosol flushing agents
- ▶ Insecticidal residual sprays
- ▶ Insecticidal bait granules/gels
- ▶ Trapping methods



Rodents - Habitat

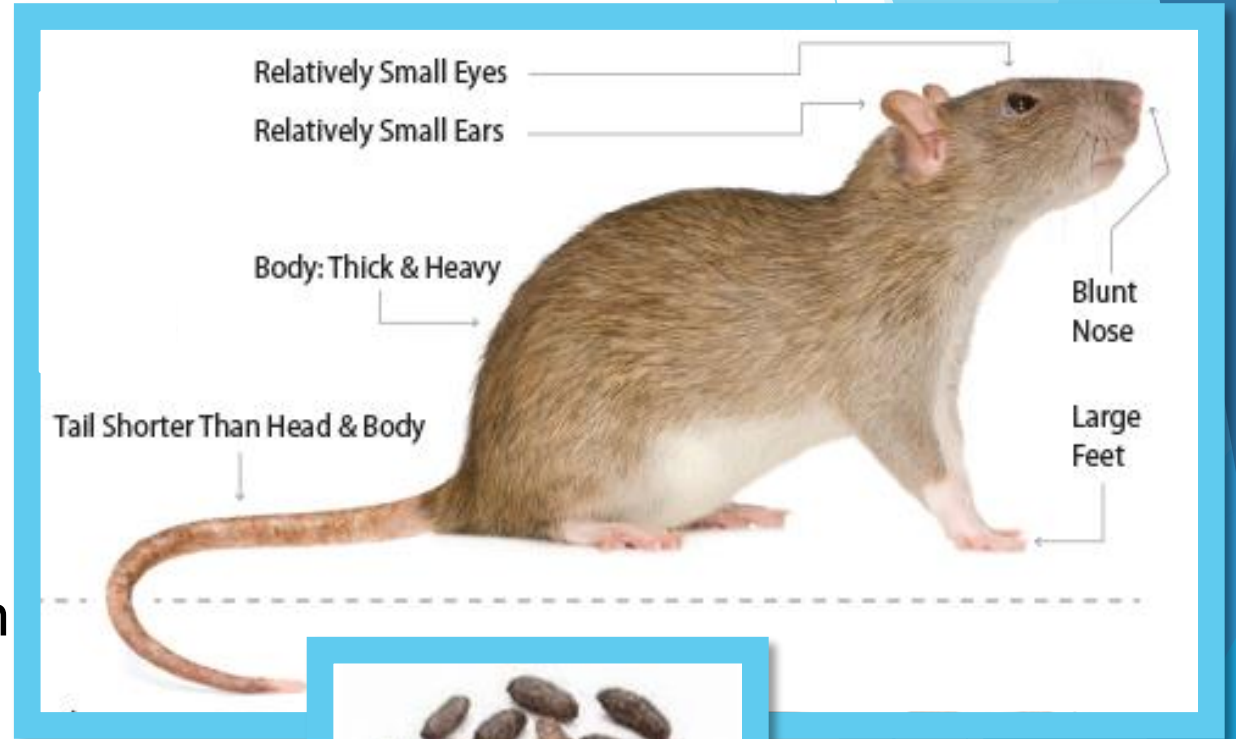
- ▶ Burrows at Waste area
- ▶ Burrows at Generator units
- ▶ Built in flower boxes at outdoor dining
- ▶ Drains
- ▶ Plant foliage i.e. Ivy or Palm trees
- ▶ Broken down equipment
- ▶ Vehicles standing for long periods of time
- ▶ Unrotated stock on pallets in receiving
- ▶ Walls cavities
- ▶ Ceilings



Know your enemy!

Species - Norway Rat *Rattus norvegicus*

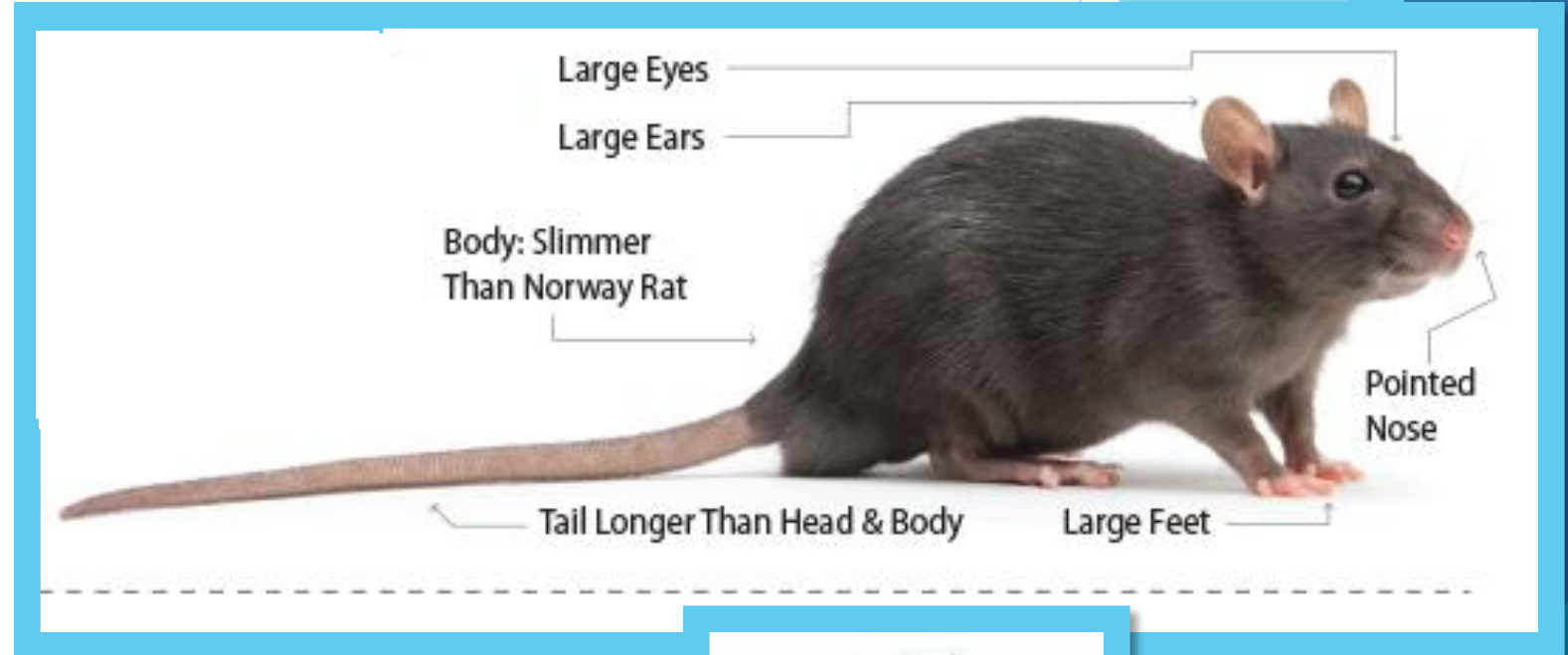
- Appearance: large, robust
- Average Weight : 200 - 500 g
- Head: Muzzle blunt
- Ears: Small
- Tail Shorter than body, dark above, pale below (30 - 46 cm in length)
- Droppings: Blunt, average length 0,6 cm
- Life Span : + 12 months
- Litter Size : 8 - 12
- Litter Per Year (max): 7
- Food Consumption/day : 20 - 50g



Know your enemy!

Species - Roof Rat *Rattus rattus*

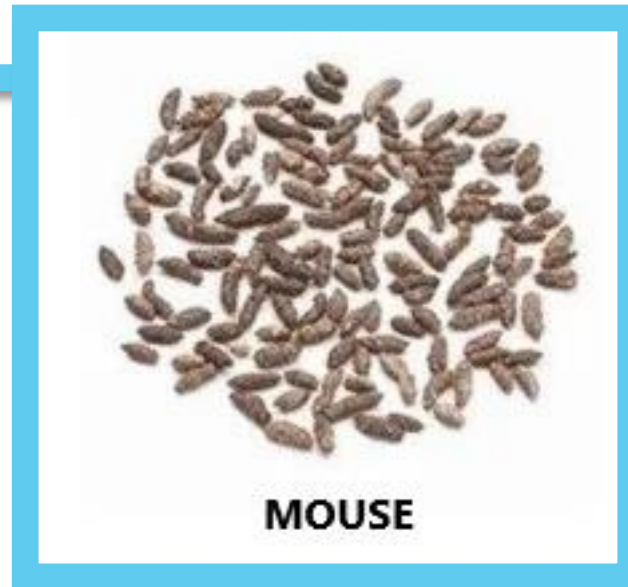
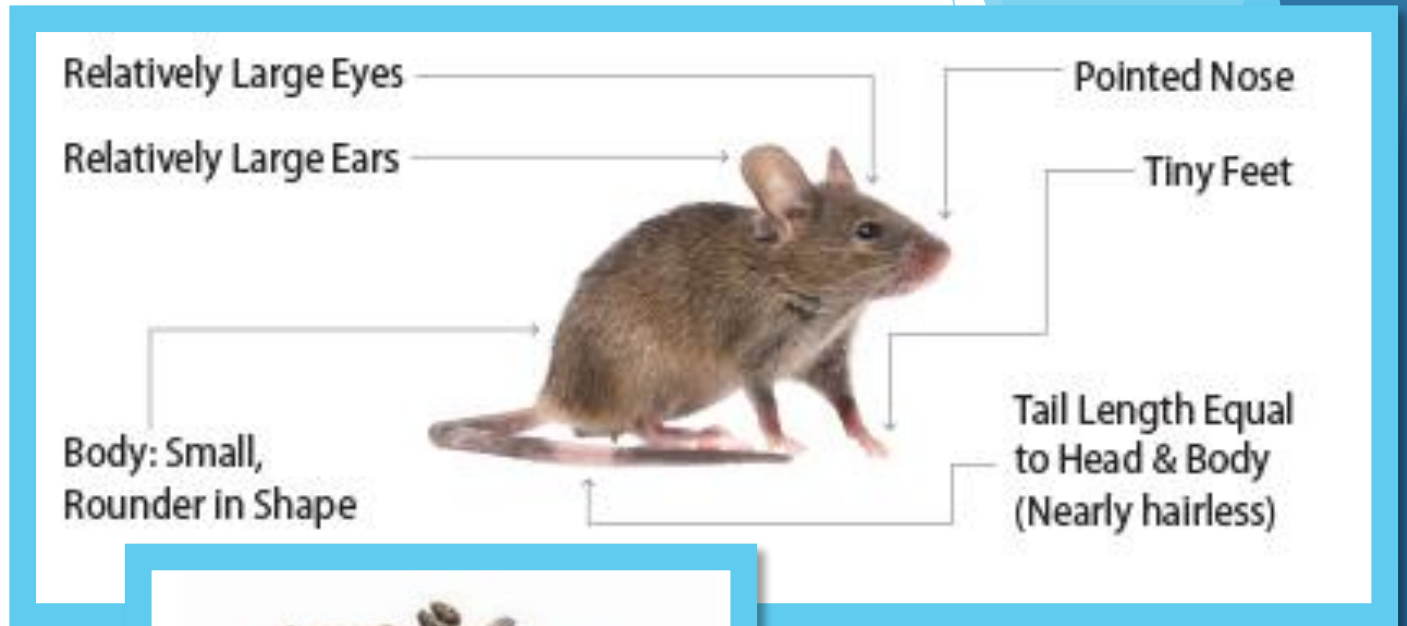
- Appearance : Sleek, graceful
33 - 43 cm in Length
- Average Weight : 140 - 260 g
- Head : Muzzle pointed
- Ears : Large
- Tail : Long, extended at least to snout, uniformly dark
- Droppings : Pointed average length 1.2 cm
- Life Span : + 12 months
- Litter Size : 6 - 10
- Litter Per Year (max) : 6
- Food Consumption/day: 15 - 25 g



Know your enemy!

Species - genus *Mus*

- Appearance : 15 - 17 cm in length, Large eyes and ears
- Average Weight : 12 - 30 g
- Tail : Equal to Head and Body
- Droppings : small with Pointed ends average length 4 - 7 mm
- Life Span : + 12 months
- Litter Size : 8 - 12
- Litter Per Year (max) : 5 - 10
- Food Consumption/day: 4 - 5 g



Rodents - Products and Application Methods

- ▶ Rodenticide baits - extruded grain blocks
- ▶ Monitoring blocks (non-toxic)
- ▶ Baiting equipment
- ▶ Back break trapping methods
- ▶ Trapping methods



Rodent Control Hierarchy



But it takes all to make it a success!

**Why
Successful
Rodent
Control Is
Often So
Difficult?**



**Because Of
Man
Kindness
&
Indifference
Attitude.**

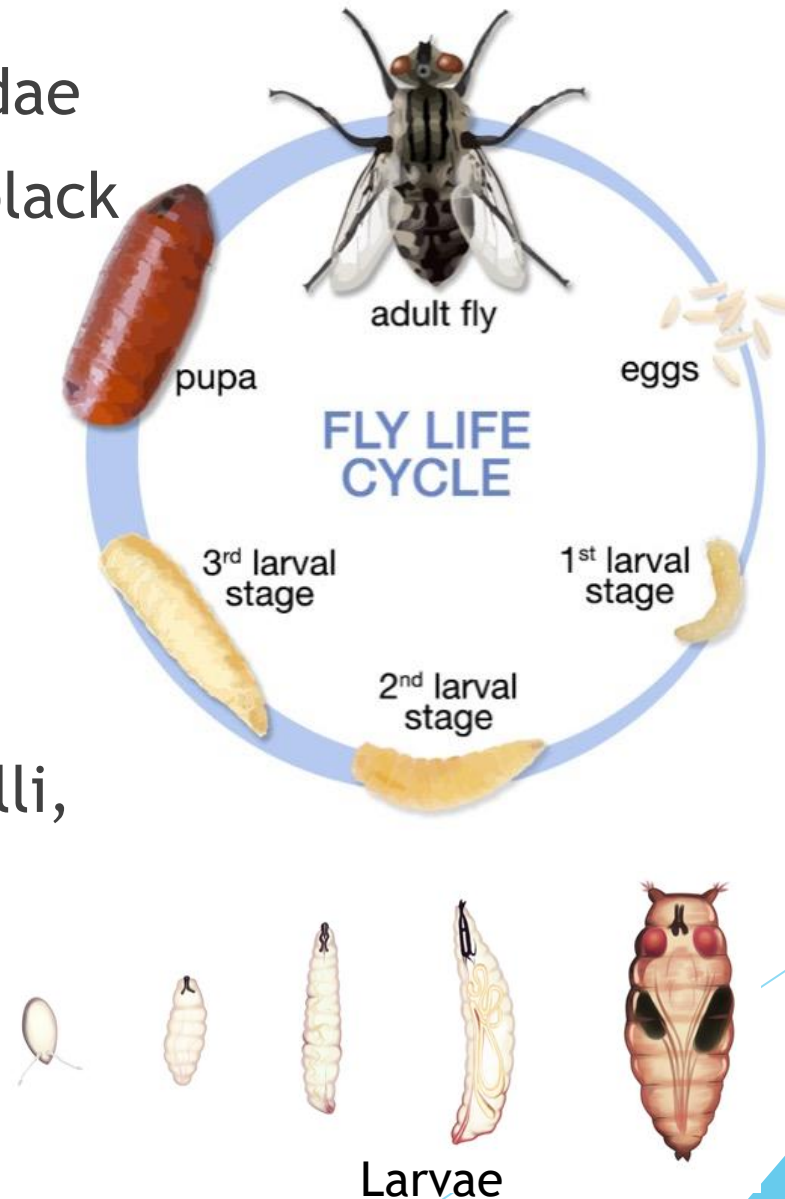
Fly - Habitat

- ▶ Garbage (waste area)
- ▶ Human or animal excrement
- ▶ Decaying fruits & veg
- ▶ Ablutions including shower drains
- ▶ Uncleaned garbage bins
- ▶ Stagnant water areas and sewerage
- ▶ Animal carcasses



Know your enemy!

- ▶ Species : Flesh Flies - Sarcophagidae
- ▶ Appearance : Gray bodies with 3 black stripes on the thorax
- ▶ Average Length : 10 to 22mm
- ▶ Larva : Yellowish 10 to 22 mm
- ▶ Life Span - 5-7 days (Adult)
- ▶ Litter Size - Up to 325 larvae
- ▶ Disease Transmitted : leprosy bacilli, intestinal pseudomyiasis



Know your enemy!



Blow Fly



Fruit Fly



Drain Fly



Flesh Fly



House Fly



Cluster Fly



Horse Fly

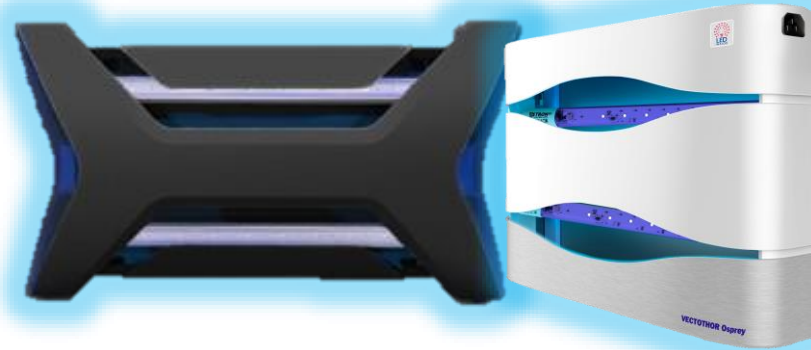


Crane Fly

Fly Control - Products and Application Methods



Bait Traps



Insect Light Traps



Insect Growth Regulator



Fly Bait



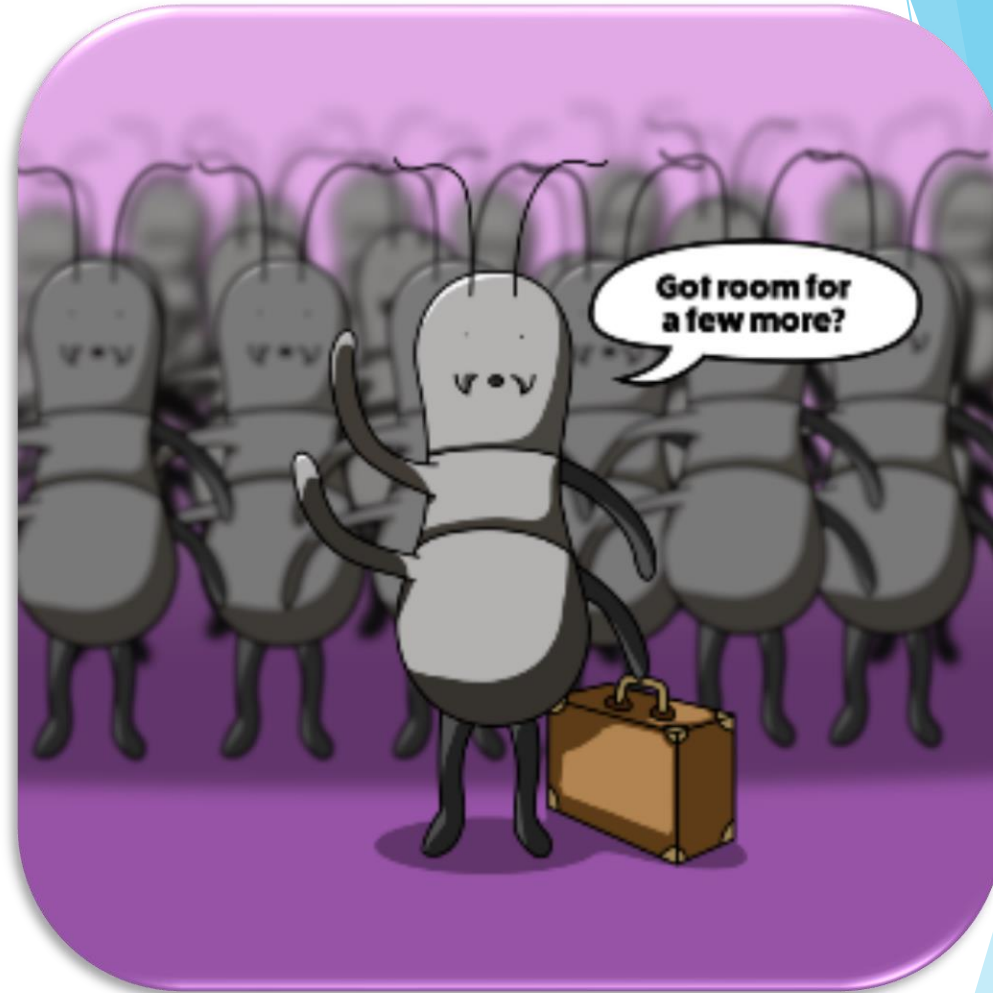
Insecticide Spray

Nuisance Pests

Damage to Stock



- ▶ Ants
- ▶ Birds
- ▶ Casual invaders i.e. crickets, snails, earwigs, centipedes, fish moths etc,



Products & Application Methods for Nuisance Crawling Pests

▶ Bait traps



▶ Insecticidal bait



▶ Insecticidal spray



Products & Application Methods for Bird Control

- ▶ Bird netting
- ▶ Bird spikes
- ▶ Flock Off



The background features a collage of colorful sticky notes in shades of blue, green, pink, yellow, and purple. Each sticky note has a large black question mark printed on it. The notes are layered and slightly offset, creating a sense of depth. A diagonal white line runs across the bottom right corner of the image.

Thank you for
your time!

Any Questions?

ENSYSTEX[®]
THE INNOVATORS